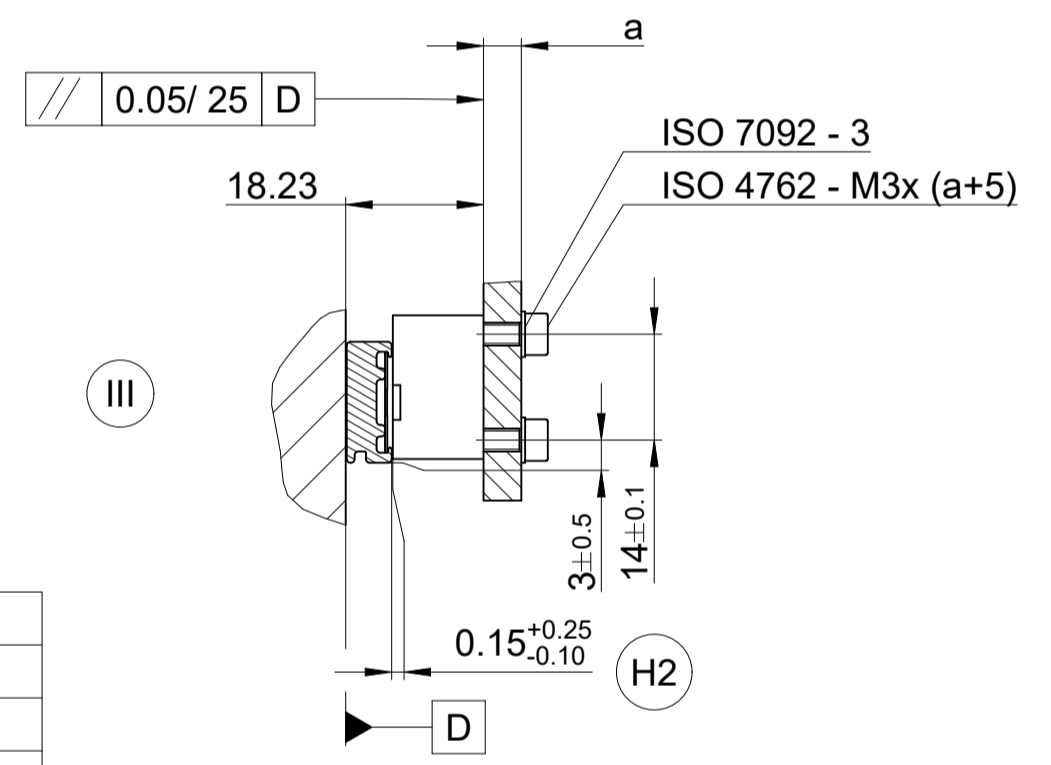
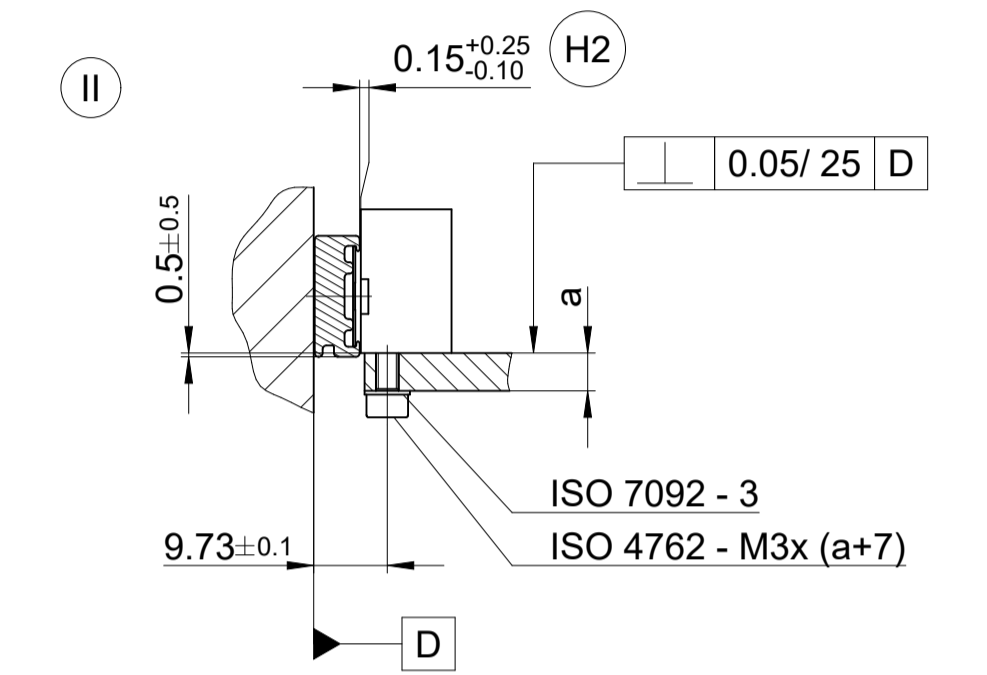
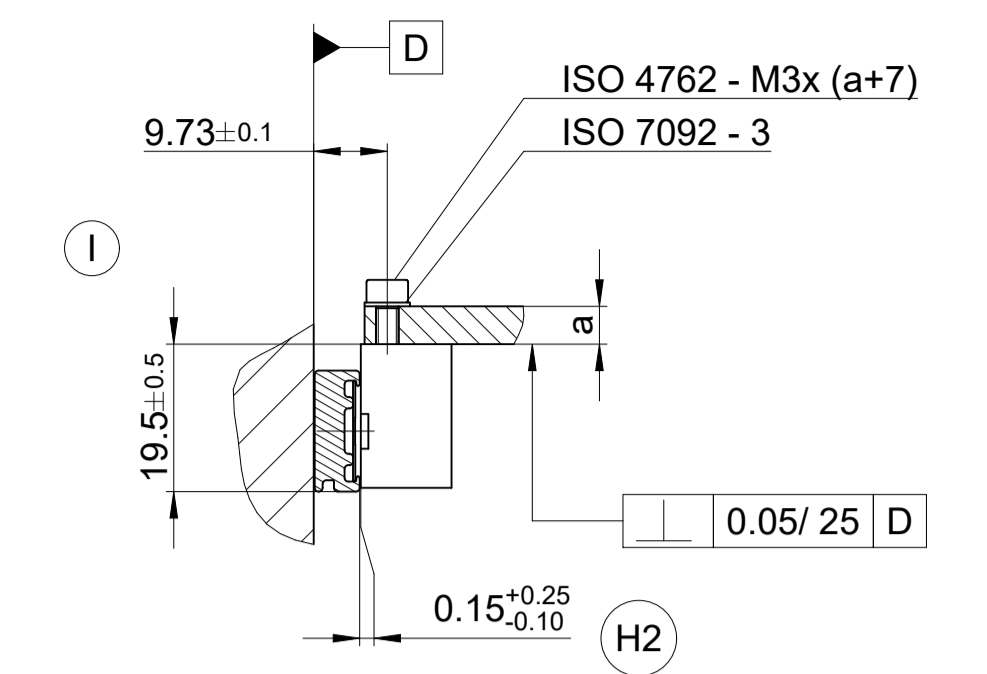
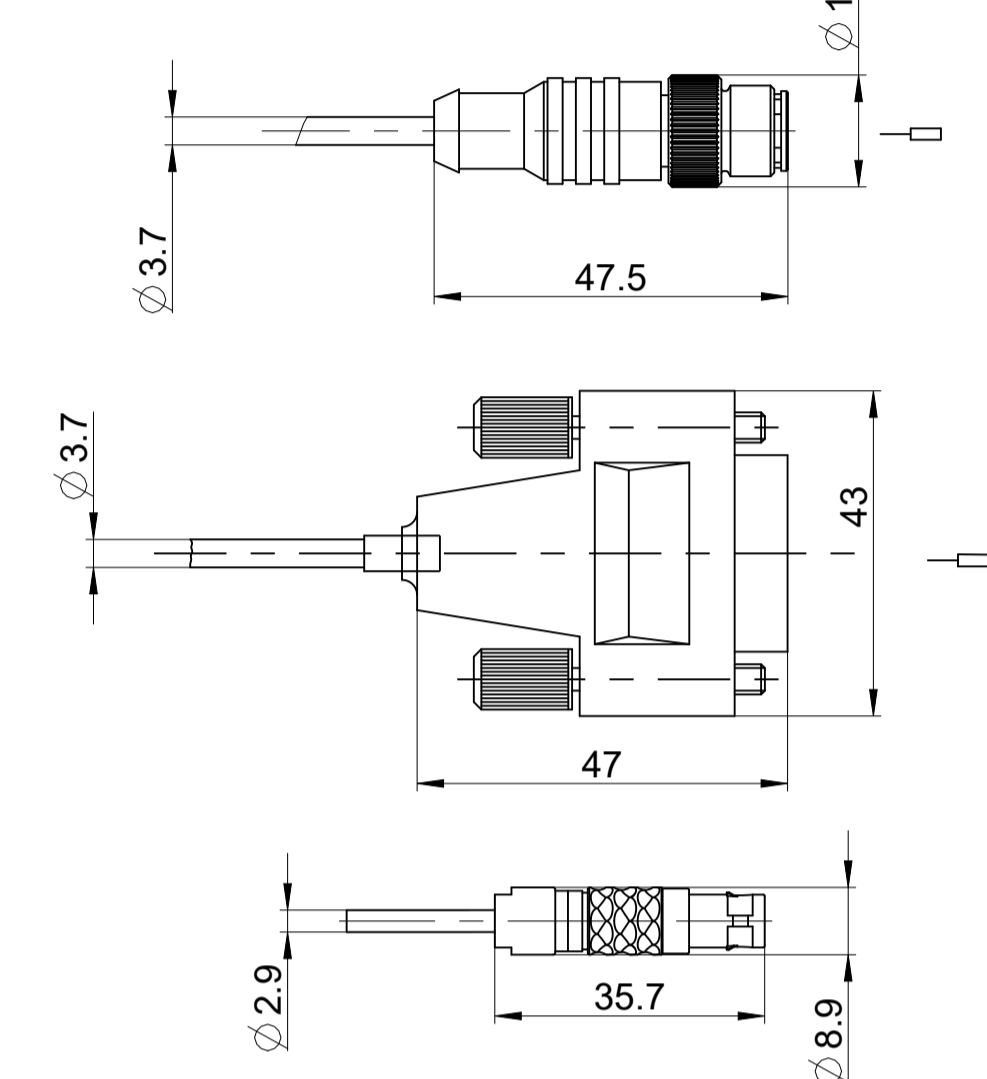
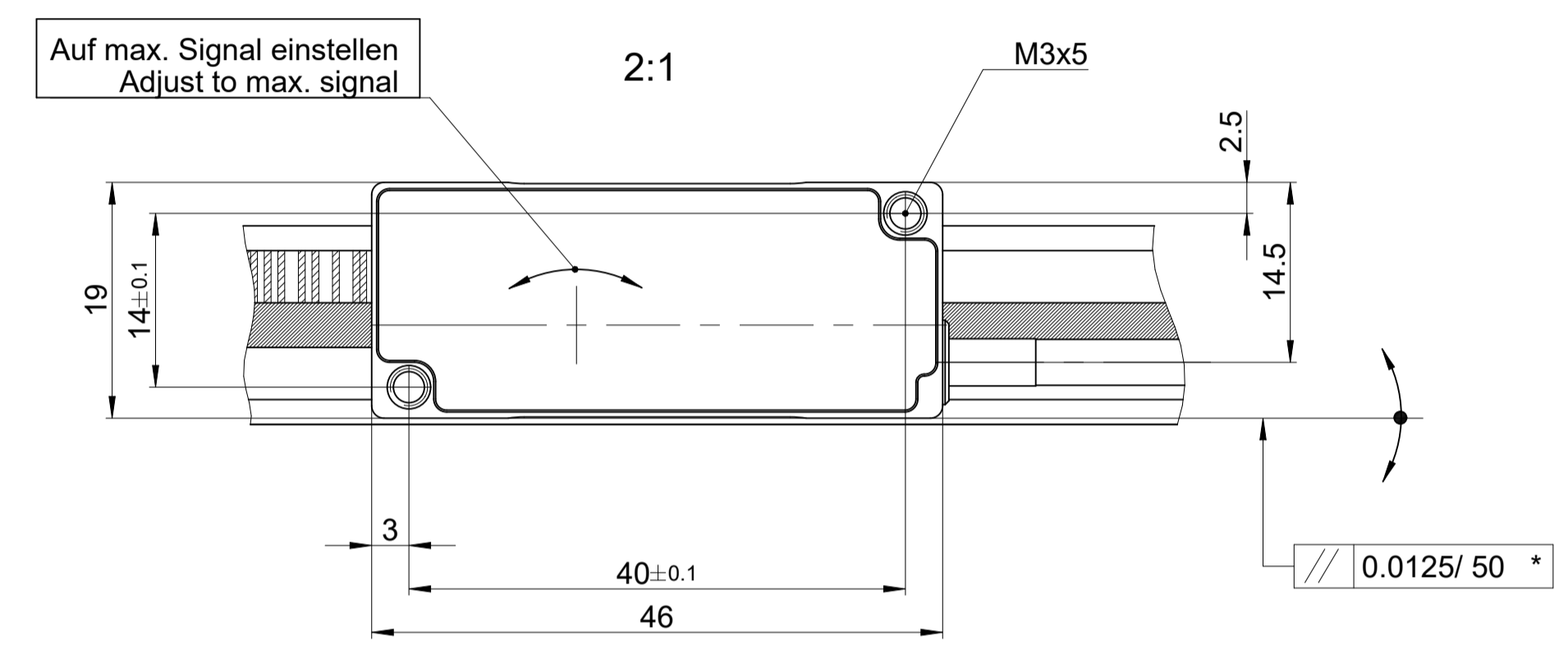
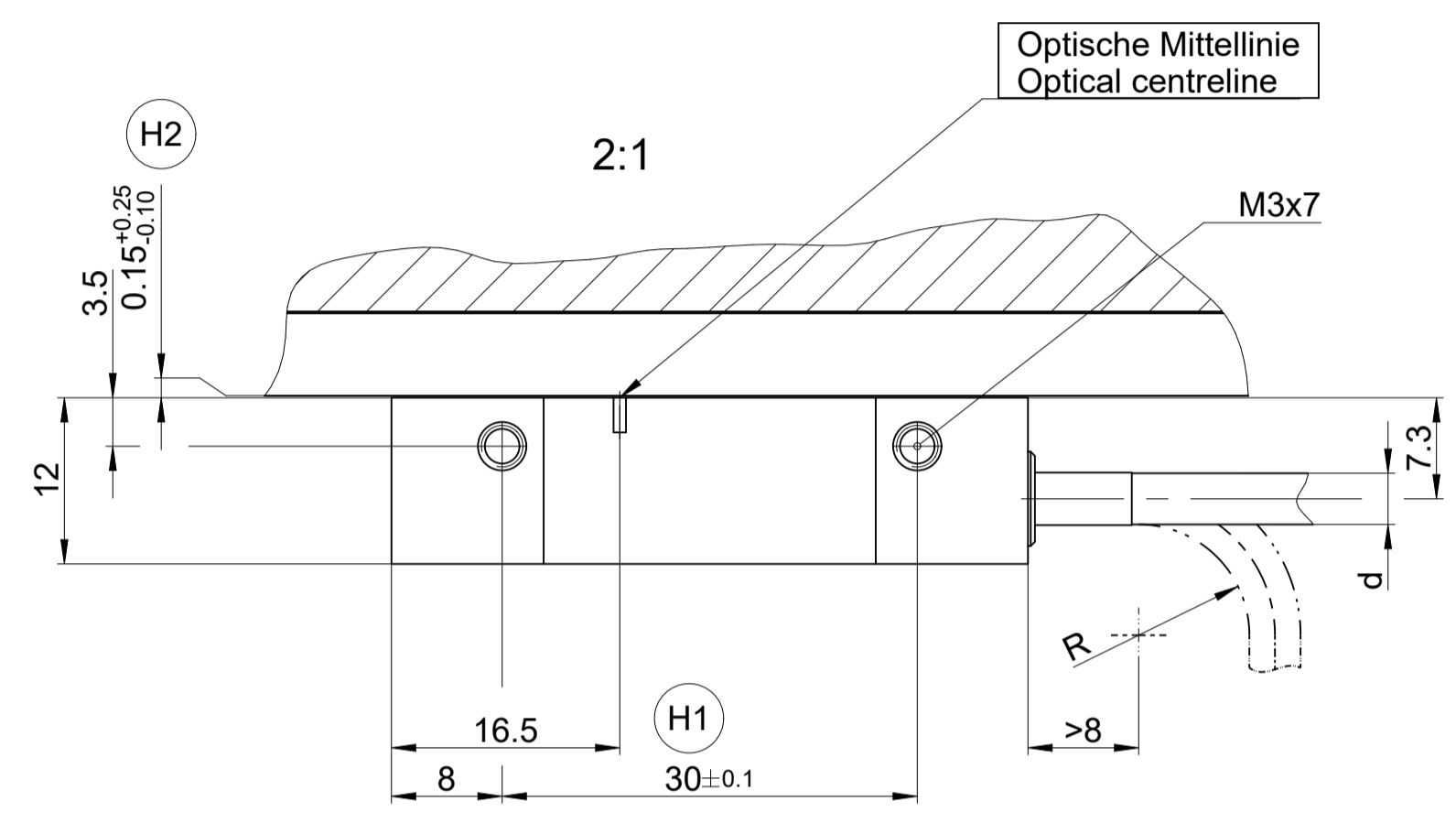
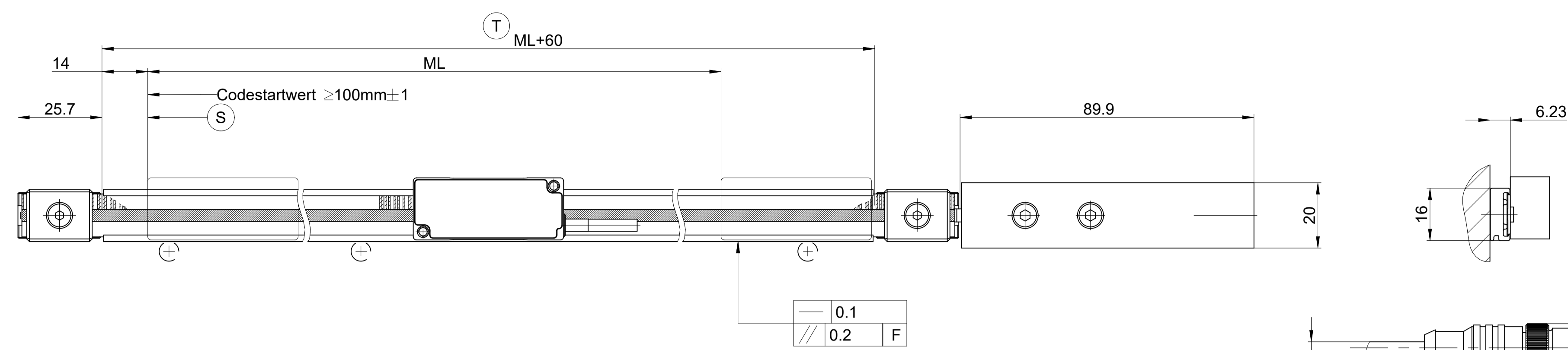
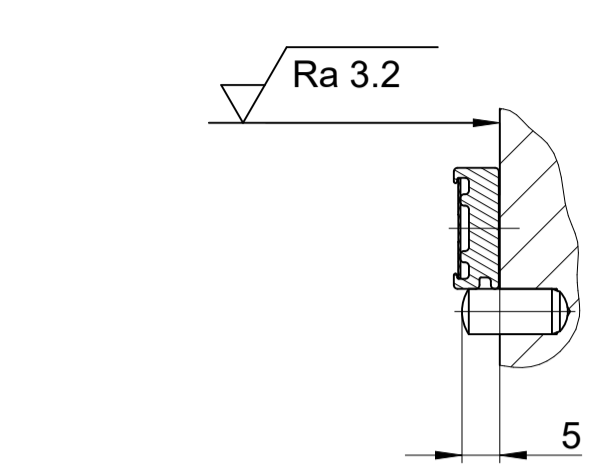
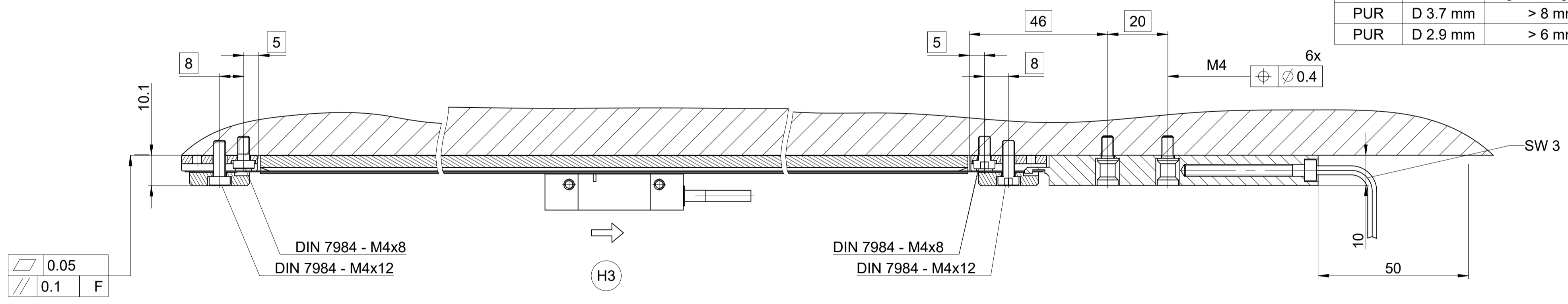


ML ≤ 2040

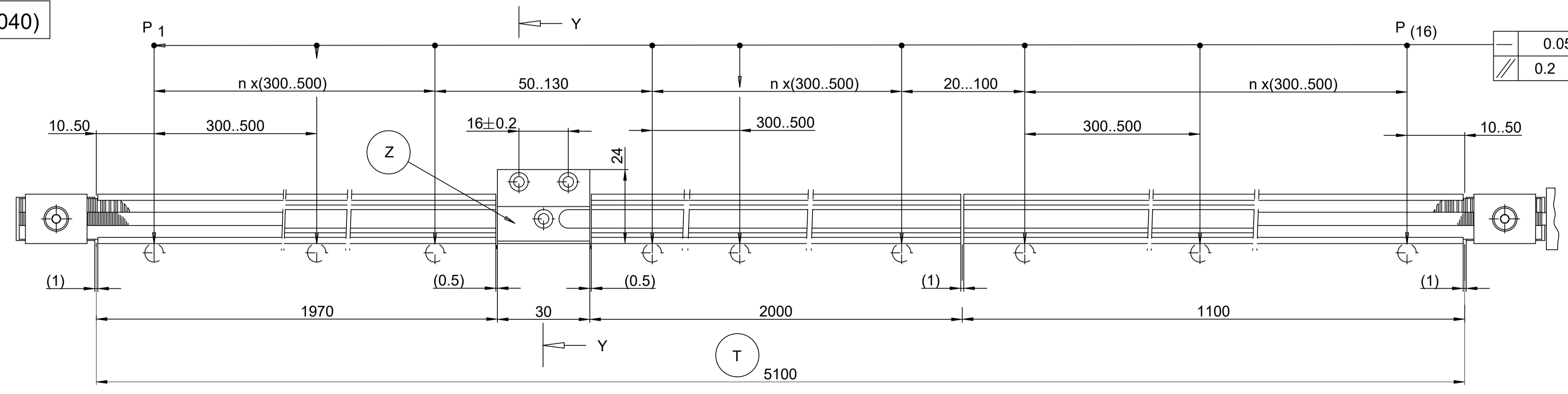
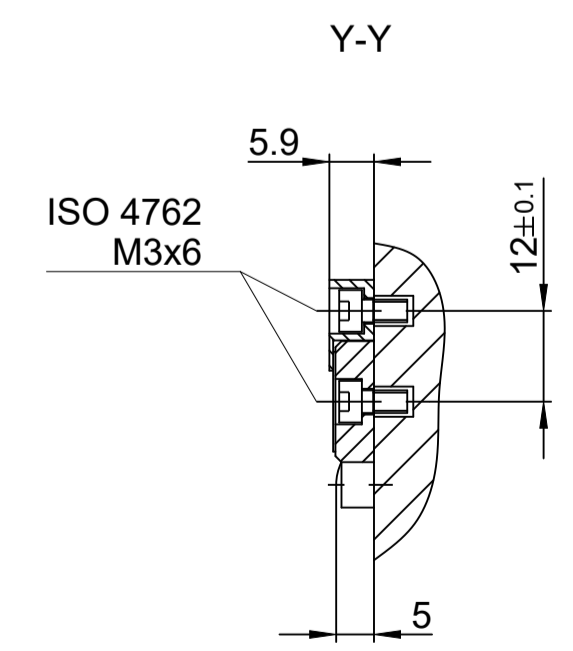


	d	R	R
		Feste Verlegung Rigid configuration	Wechselbiegung Frequent flexing
PUR	D 3.7 mm	> 8 mm	≥ 40 mm
PUR	D 2.9 mm	> 6 mm	≥ 30 mm

ML	Z
≤ 3040	0x
≤ 5040	1x
≤ 7040	2x
•	•
•	•
≤ 30040	14x



ML > 2040 (z. B. 5040)



- (I) (II) (III) = Montagemöglichkeiten / Mounting options
- F = Maschinenführung / Machine guideway
- * = Anbaufehler plus dyn. Führungsfehler / Mounting failure plus dyn. failures of guideway
- P = Messpunkte zum Ausrichten / Gauging points for alignment
- (S) = Beginn der Messlänge ML / Beginning of measuring length ML
- (T) = Träger Länge / Carrier length
- (Z) = Zwischenstück ab Messlänge > 3040mm / Spacer required as of measuring length > 3040mm
- (H1) = Optische Mittellinie / Optical centreline
- (H2) = Montageabstand Abtastkopf zu Profil / Mounting gap
- (H3) = Bewegungsrichtung der Abtasteinheit für Ausgangssignale gemäß Schnittstellenbeschreibung / Direction of scanning unit motion for output signals in accordance with interface description

ID number: 1200642-01		Change No. C160627-05		Serie	
Original drawing		LIC 41x5		Tolerances as per ISO 8015	
Scale		Format		General Tolerances ISO 2768-1:2008-mH ±0.2	
Dimensions in mm		1:1 A1		Anschlussmaße / Mating Dimensions	
The reproduction, distribution and utilization of this document as well as the communication of its contents to others without express authorization is prohibited. Offenders will be held liable for the payment of damages. All rights reserved in the event of the grant of a patent, utility model or design. (ISO 15015)					
HEIDENHAIN		DR. JOHANNES HEIDENHAIN GmbH		Released	
83301 Traunreut, Germany		15.12.2023		Version / Revision / Sheet / Page	
		D1200642-03 - A-01		1 of 1	