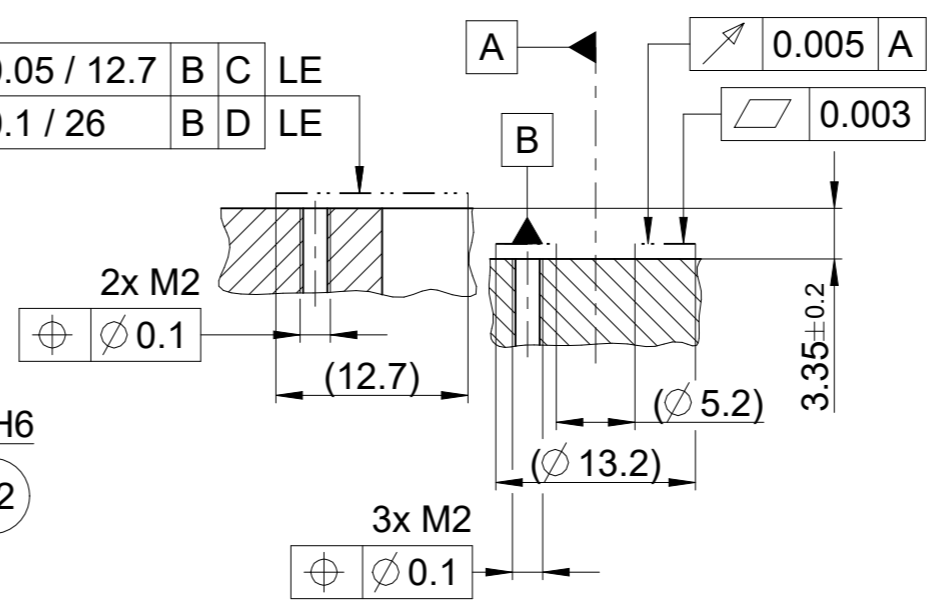
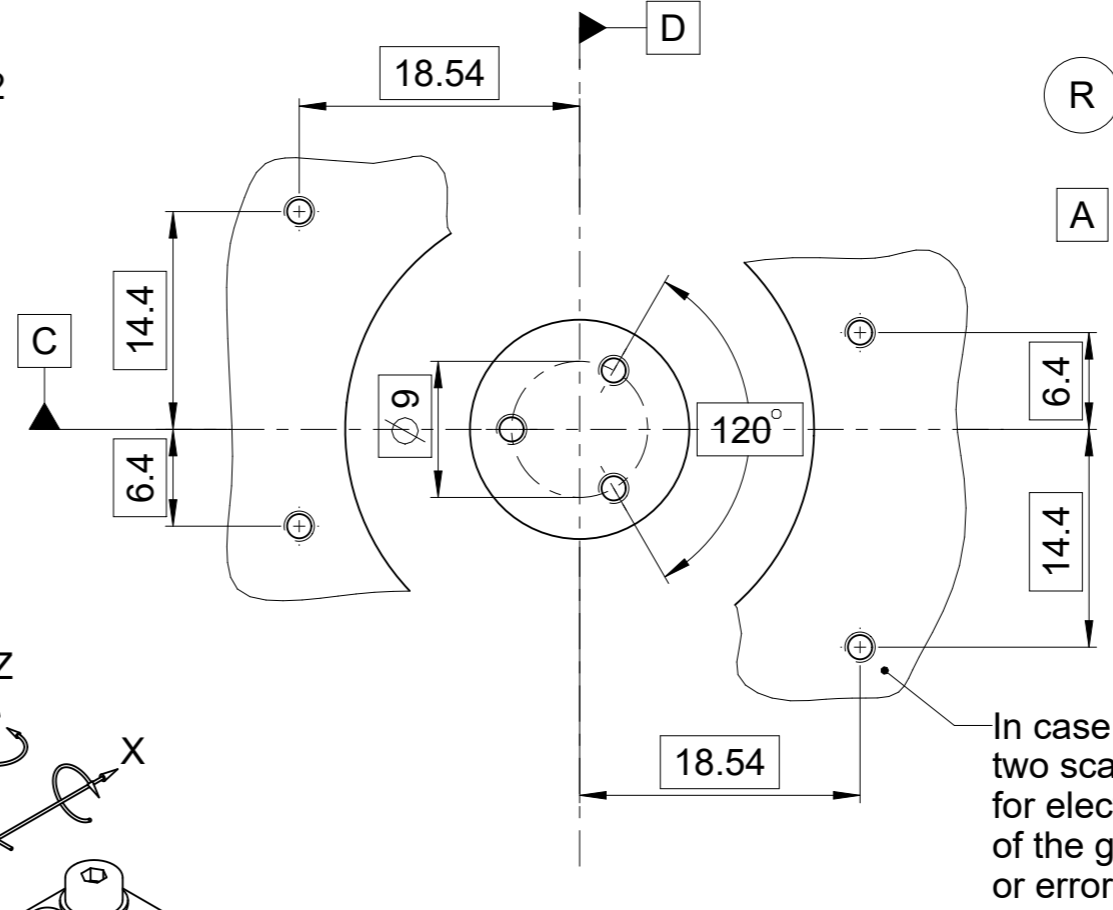
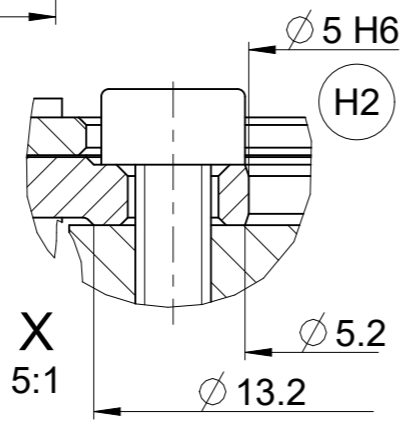
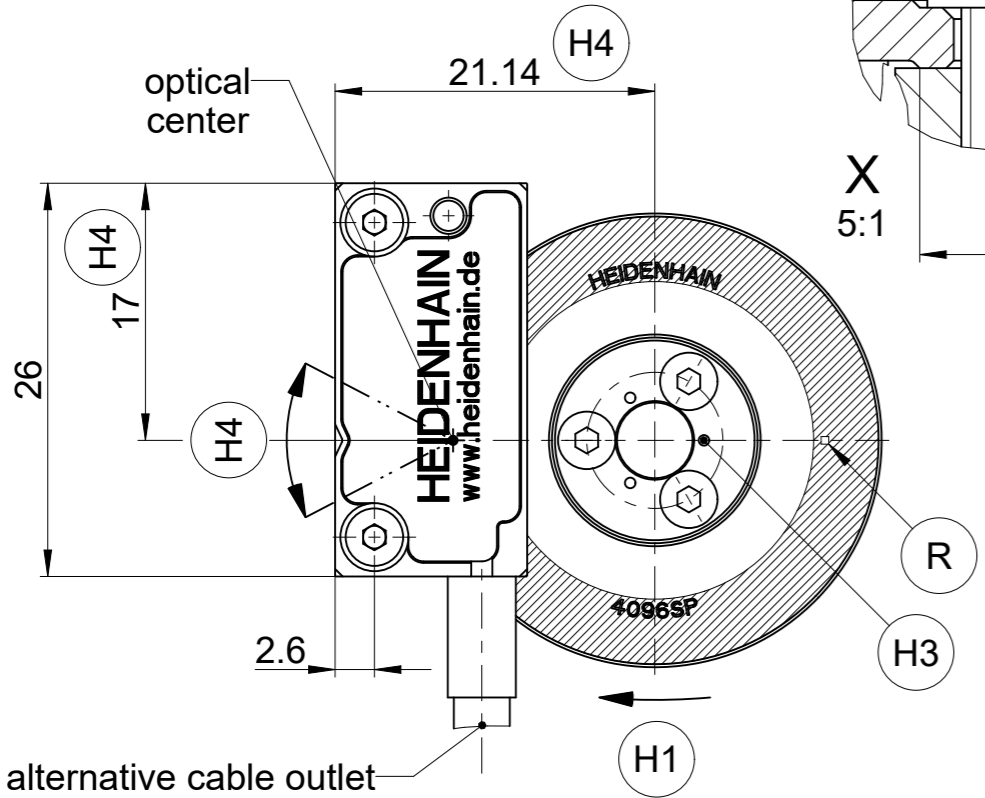


Required mating dimensions

///	0.05 / 12.7	B	C	LE
///	0.1 / 26	B	D	LE



- (H1) = Positive direction of rotation
- (H2) = Centering collar
- (H3) = Marks for centering the circular scale (3 x 120°)
- (H4) = Fine-adjustment of encoder-head to reach best incremental signal (within "play" of the mounting screws); given measures are nominal
- (R) = Reference mark
- (A) = Bearing



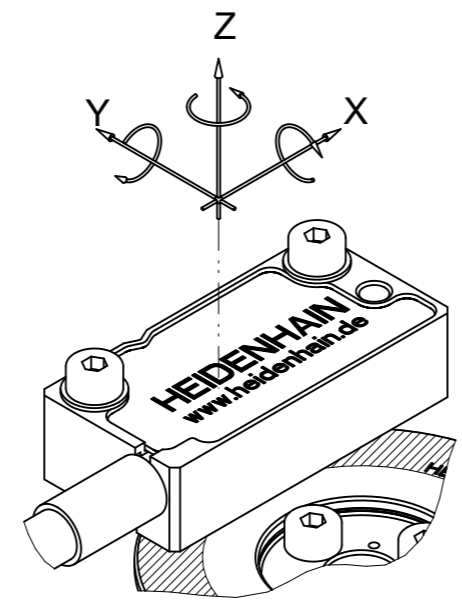
In case of using two scanning heads for electrical centering of the graduation or error-compensation

alternative cable outlet and connector available: see D1223068

Mounting tolerances; given tolerances in combination

X	Y	Z	Rx	Ry	Rz
*	*	±0.2	±4mrad	±4mrad	*

*adjustable, see (H4)



Original drawing		ERO 20x0 4096SP		ID number:
Scale	Format	ERO		Change No. C089371-45
Dimensions in mm	2:1 A3	Anschlussmaße / Mating Dimensions		Phase: Serie
				Tolerierung nach DIN ISO 8015 Tolerances as per DIN ISO 8015
				Allgemeintol. ISO 2768-mH ≤6mm:±0,2 General tol. ISO 2768-mH ≤6mm:±0,2

The reproduction, distribution and utilization of this document as well as the communication of its contents to others without express authorization is prohibited. Offenders will be held liable for the payment of damages. All rights reserved in the event of the grant of a patent, utility model or design. (ISO 16016)

886 200 A3