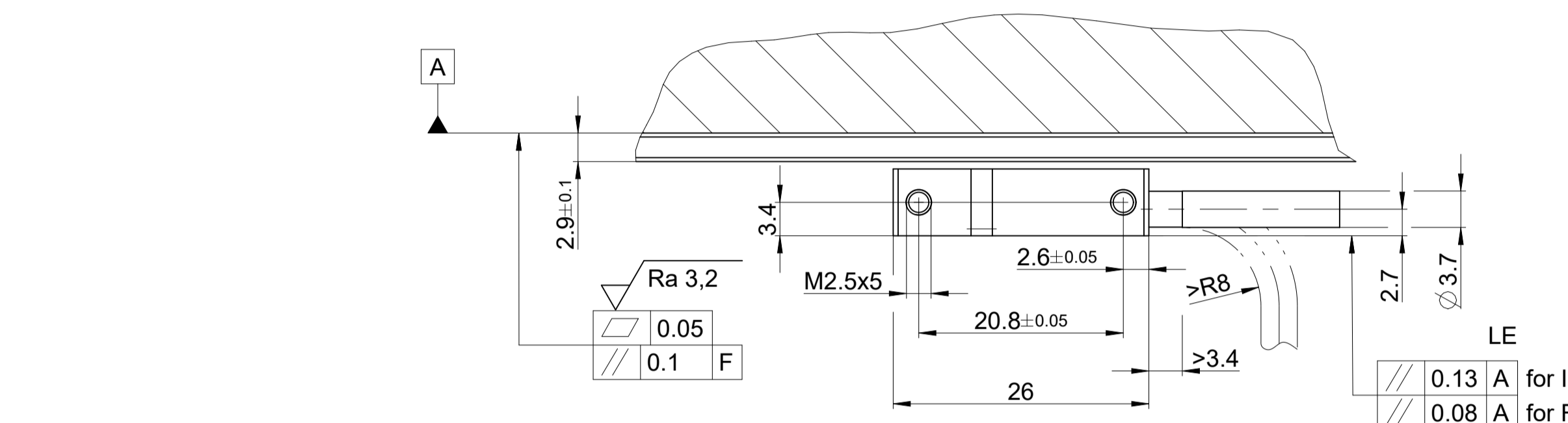
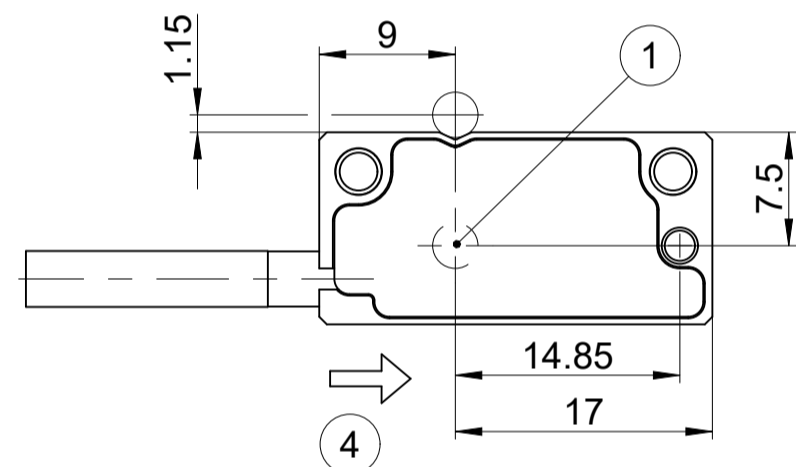


Auf max. Signal einstellen
Adjust to max. signal

LE
0.05 B for IKS
0.01 B for RI *



Kabelausgang links; weitere Alternativen siehe D1223068
Cable outlet left side; for further alternatives see D1223068



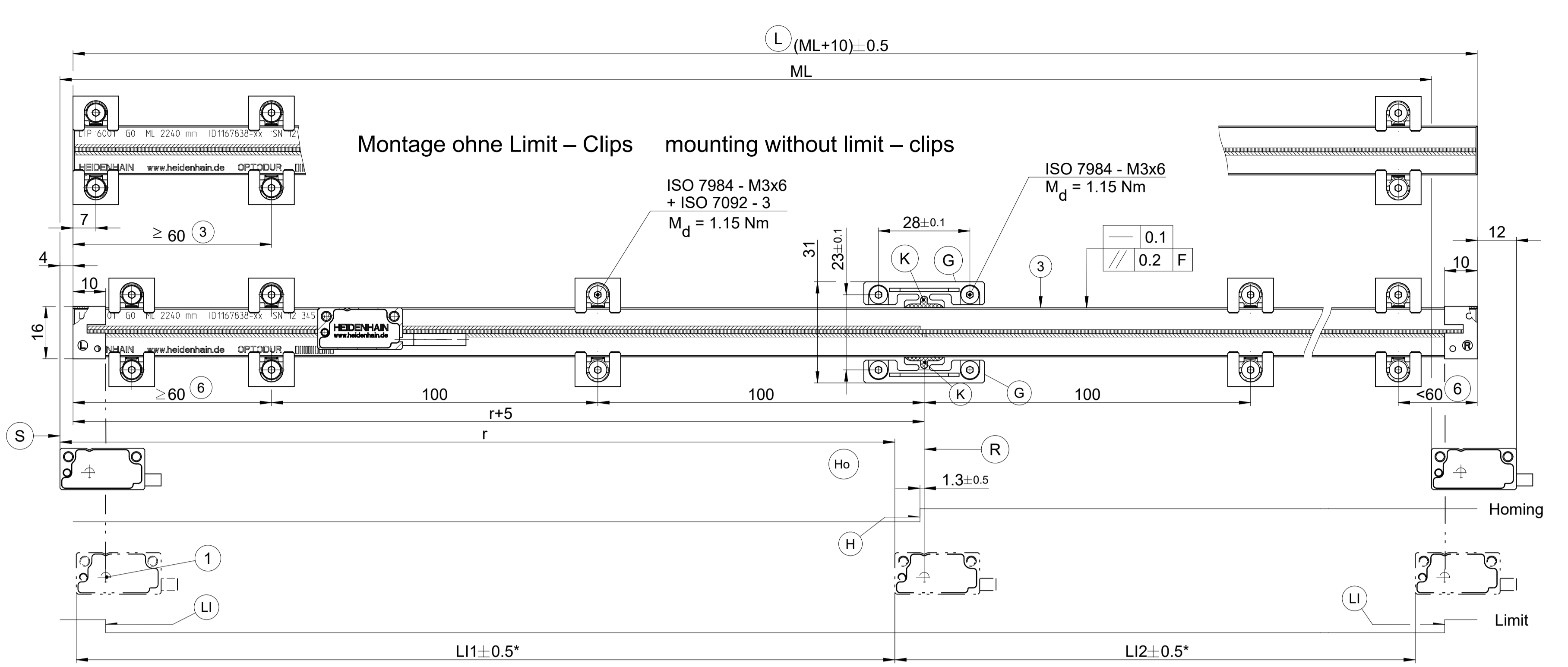
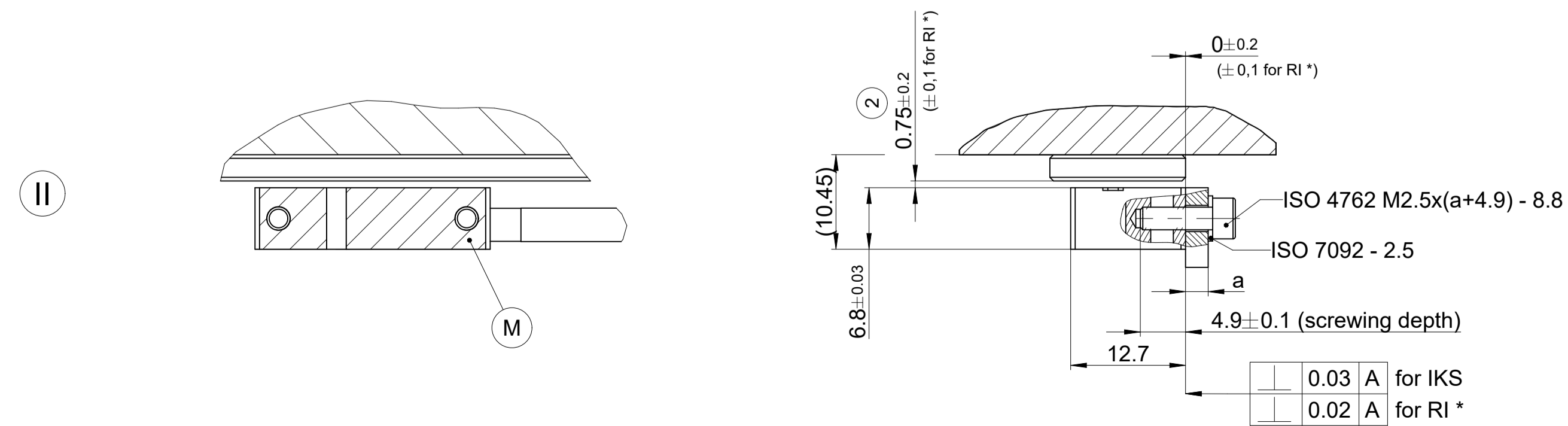
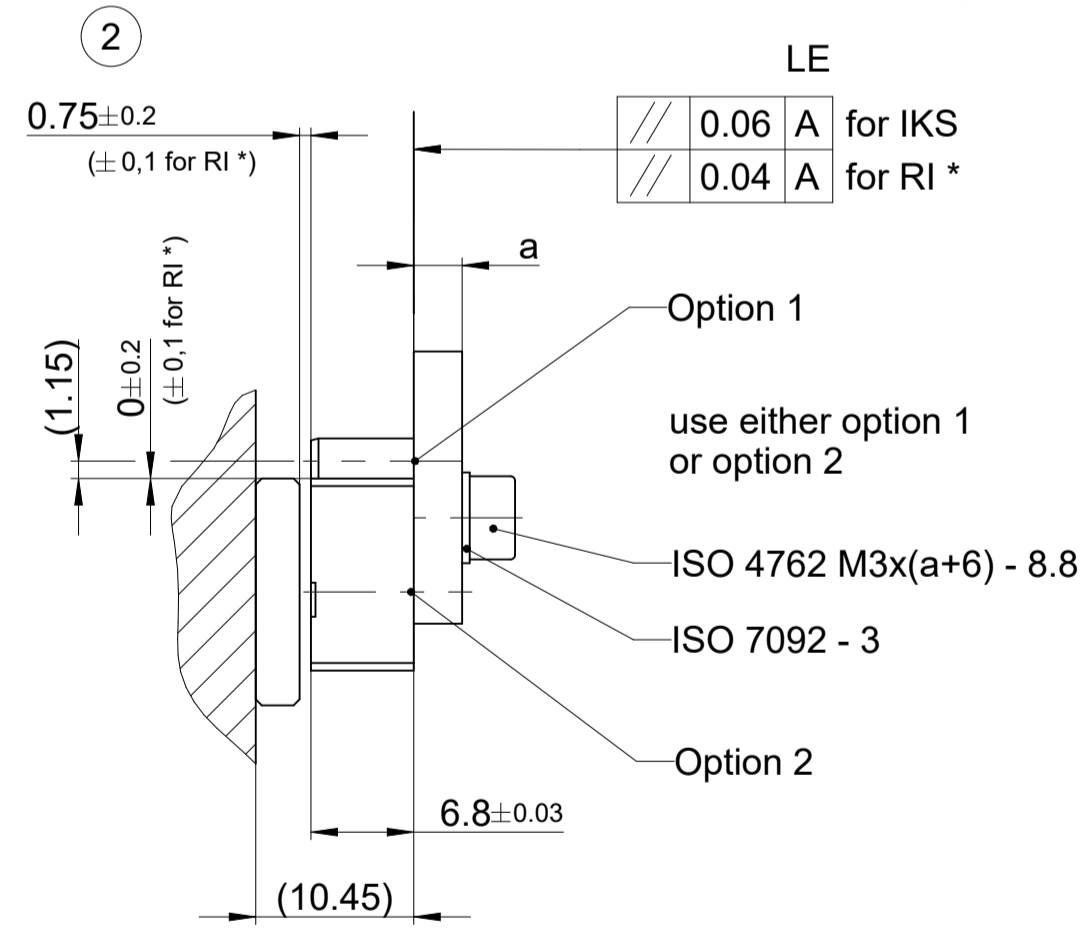
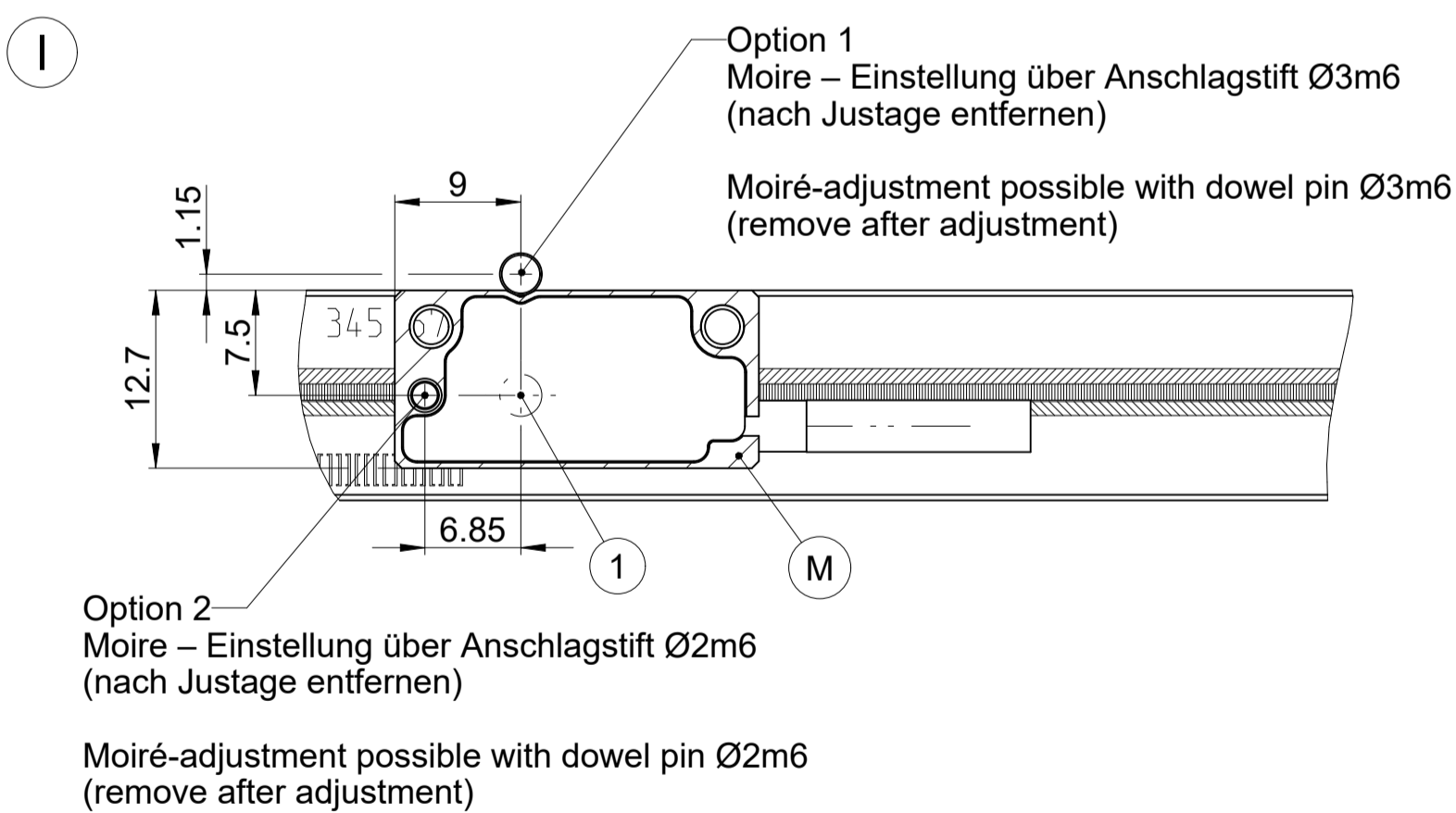
Position Anschlagstifte
Position stop pins

Hinweis: Maßstab immer nur einseitig anschlagen
Note: Only use one bench edge exclusively

bevorzugte Anschlagseite
recommended bench edge
ML ≤ 2040
alternative Anschlagseite
alternative bench edge

bevorzugte Anschlagseite
recommended bench edge
ML > 2040
alternative Anschlagseite
alternative bench edge

Möglichkeiten für die Befestigung des Abtastkopfes
Possibilities for mounting the scanning head



Montage ohne Limit – Clips mounting without limit – clips

ISO 7984 - M3x6 + ISO 7092 - 3
M_d = 1.15 Nm

I II = Montagemöglichkeiten

* = Maximale Änderung im Betrieb

F = Maschinenführung

G = Fixpunktelement zur Definition des thermischen Fixpunktes

H = Homing Schaltflanken

Ho = Schaltpunkt Homing

K = Klebstoff

L = Maßstablänge

LI = Limit Schaltflanken

M = Montagefläche

R = Referenzmarken-Lage

S = Beginn der Messlänge ML

1 = Optische Mitte

2 = Montageabstand Abtastkopf zu Maßstab

3 = Anschlagfläche Maßstab

4 = Positive Bewegungsrichtung des Abtastkopfes für Ausgangssignale gem. Schnittstellenbeschreibung

5 = Abstand wird bei Montage mit Abstandsfolie eingestellt

6 = Abhängig von Messlänge ML zusätzliches Spannpratzenpaar

= Mounting options

= Max. change during operation

= Machine guideway

= Fixed-point element in order to define the thermal fixed point

= Homing edge

= Homing position

= Adhesive

= Scale length

= Limit edges

= Mounting surface

= Reference-mark position

= Beginning of measuring length ML

= Optical centre

= Mounting gap

= Stop surface scale

= Positive direction of scanning head movement for output signals in accordance with interface description

= Distance is adjusted with spacer foil during mounting process

= Depending on measuring length ML additional pair of fixing clamps

LI1/LI2 = Limit-Positionen, einstellbar = Limit positions adjustable

ML = Messlänge = Measuring length

r = Abstand zur Referenzmarke (abhängig von Maßstabsvariante) = Distance to reference mark dependent on the scale variant

RI = Referenzimpuls = Reference pulse

IKS = Inkrementalspur = Incremental track

Verfügbare Kabelstecker siehe D1223068
Available connectors see D1223068

LE = line element

Original drawing		LIP 60x1 geprätzt		ID number:	C099382-05
Scale		LIP 60x1 with fixing clamps		Change No.	C099382-05
Format		Anschlussmaße / Mating Dimensions		Phase:	
Dimensions in mm	1:1 A1			Tolerierung nach DIN ISO 8015	Tolerances as per DIN ISO 8015
				Algemeintol. ISO 2768-mH 36mm±0.2	General tol. ISO 2768-mH 36mm±0.2
				The reproduction, distribution and utilization of this document as well as the communication of its contents to others without express authorization is prohibited. Offenders will be held liable for the payment of damages. All rights reserved in the event of the grant of a patent, utility model or design. (ISO 15015)	
HEIDENHAIN		DR. JOHANNES HEIDENHAIN GmbH		Version Revision Sheet Page	
83301 Traunreut, Germany		D1190866-01 - A-01		1 of 1	