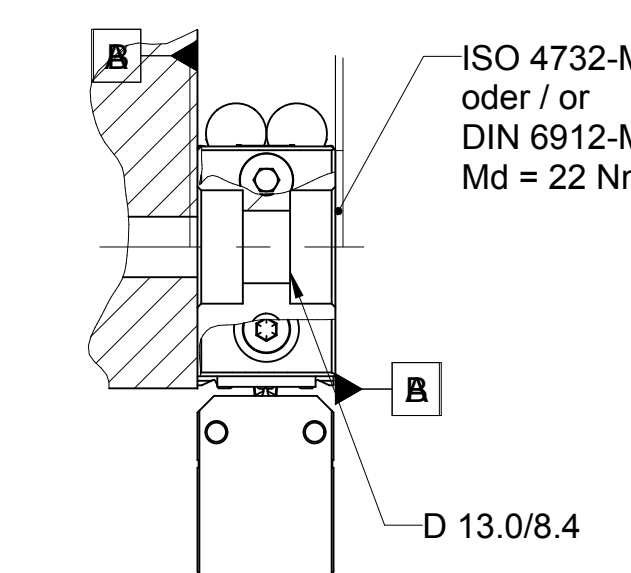
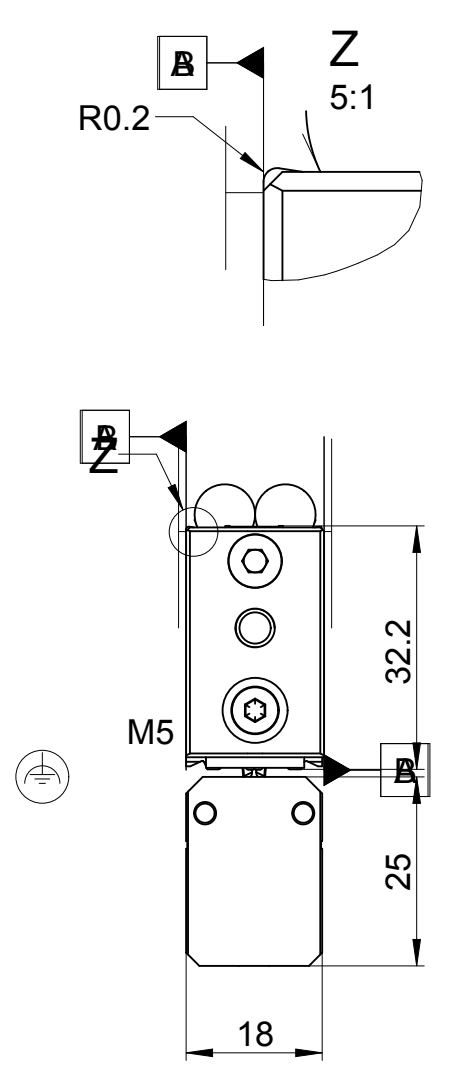
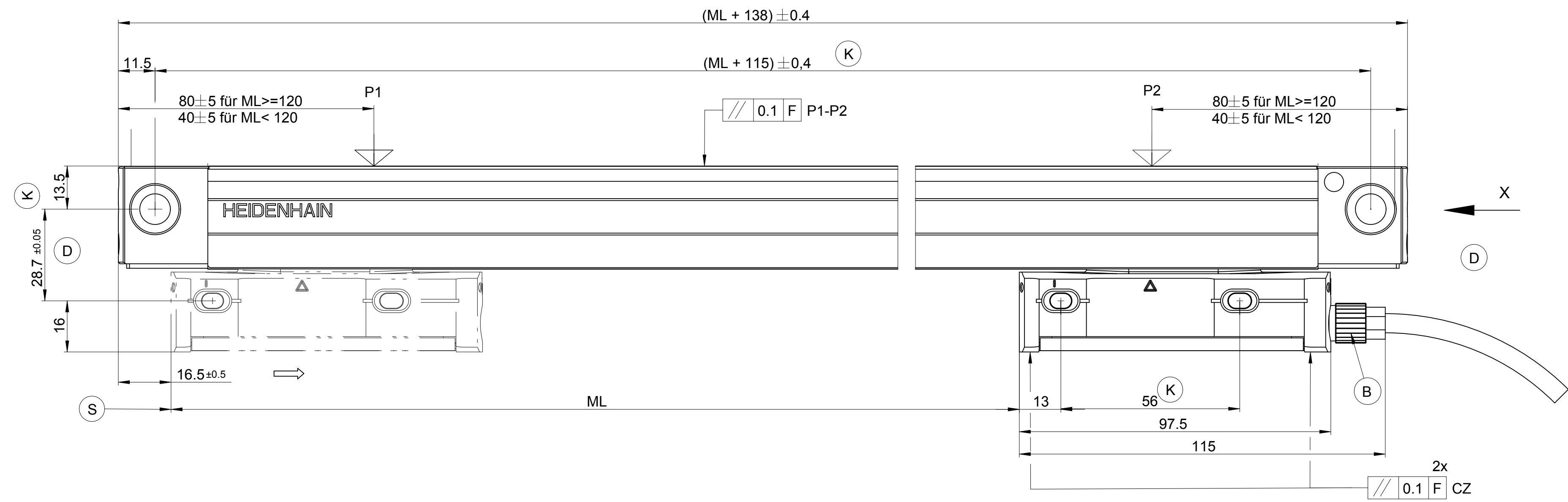
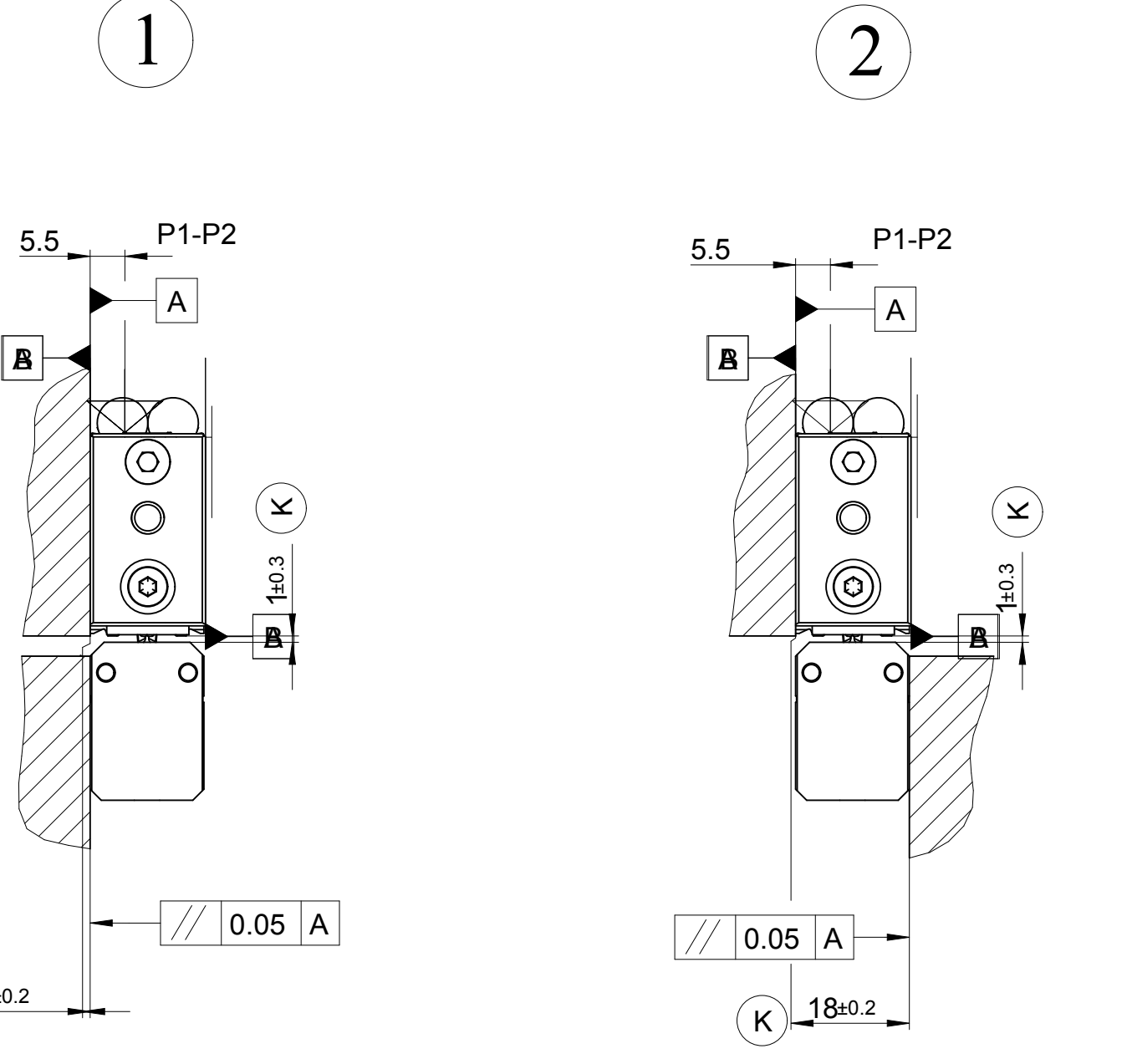


**Endstück 12A**

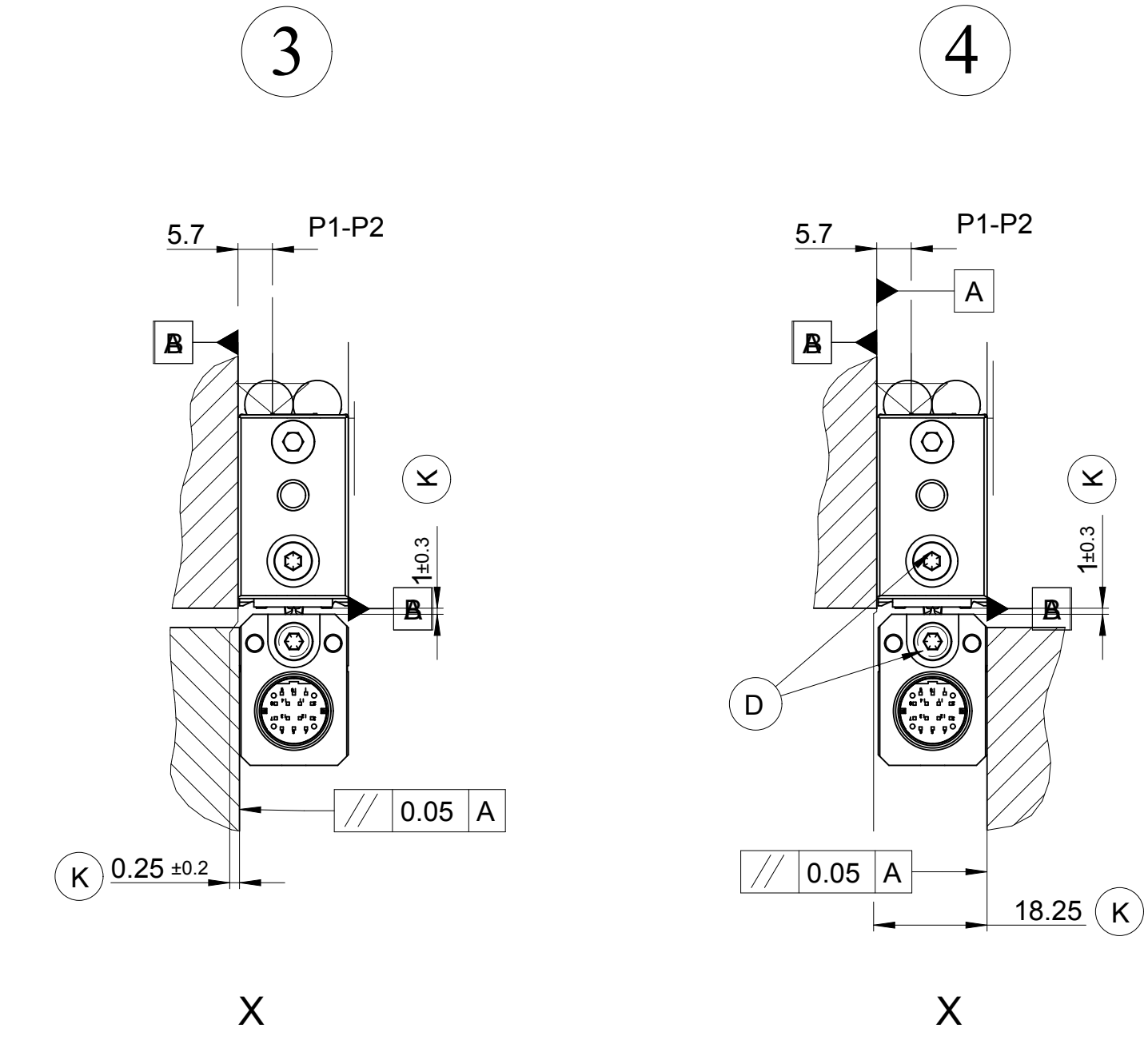


**Montagemöglichkeiten mit Befestigungsendstück für M8 (12A) / Mounting possibilities with mounting block for M8 (12A)**

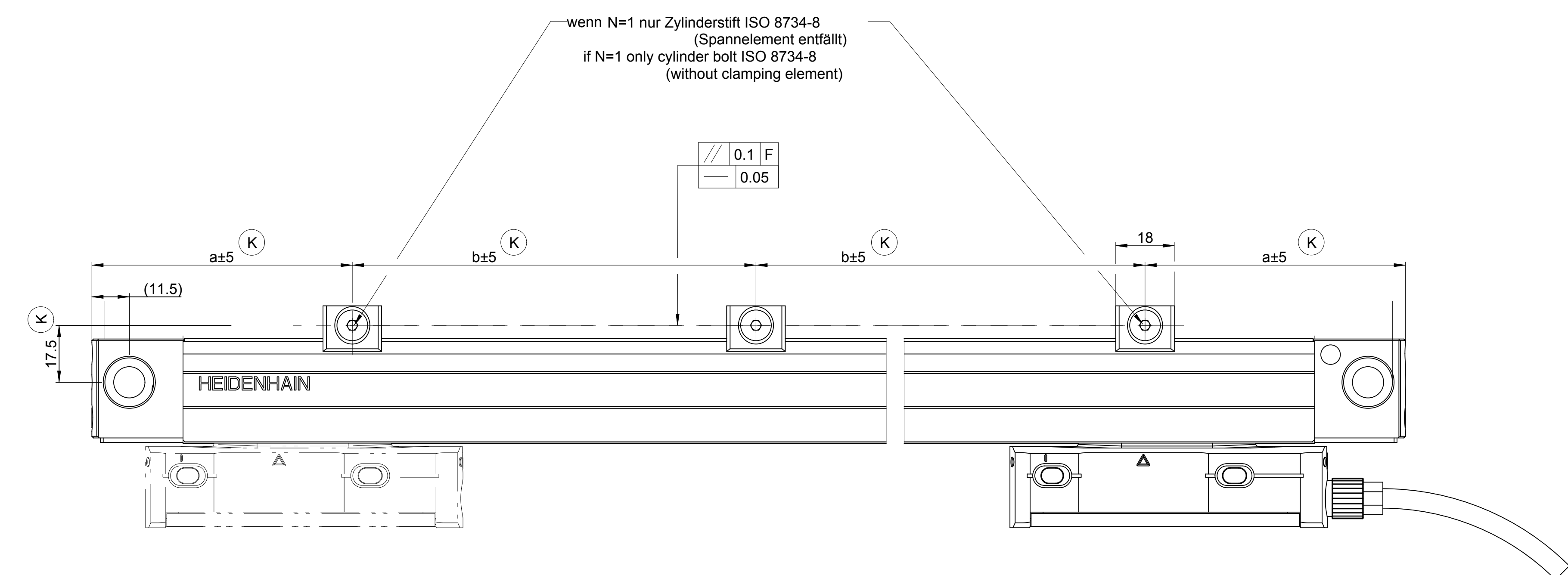
**Kabelausgang rechts**



**Kabelausgang links**

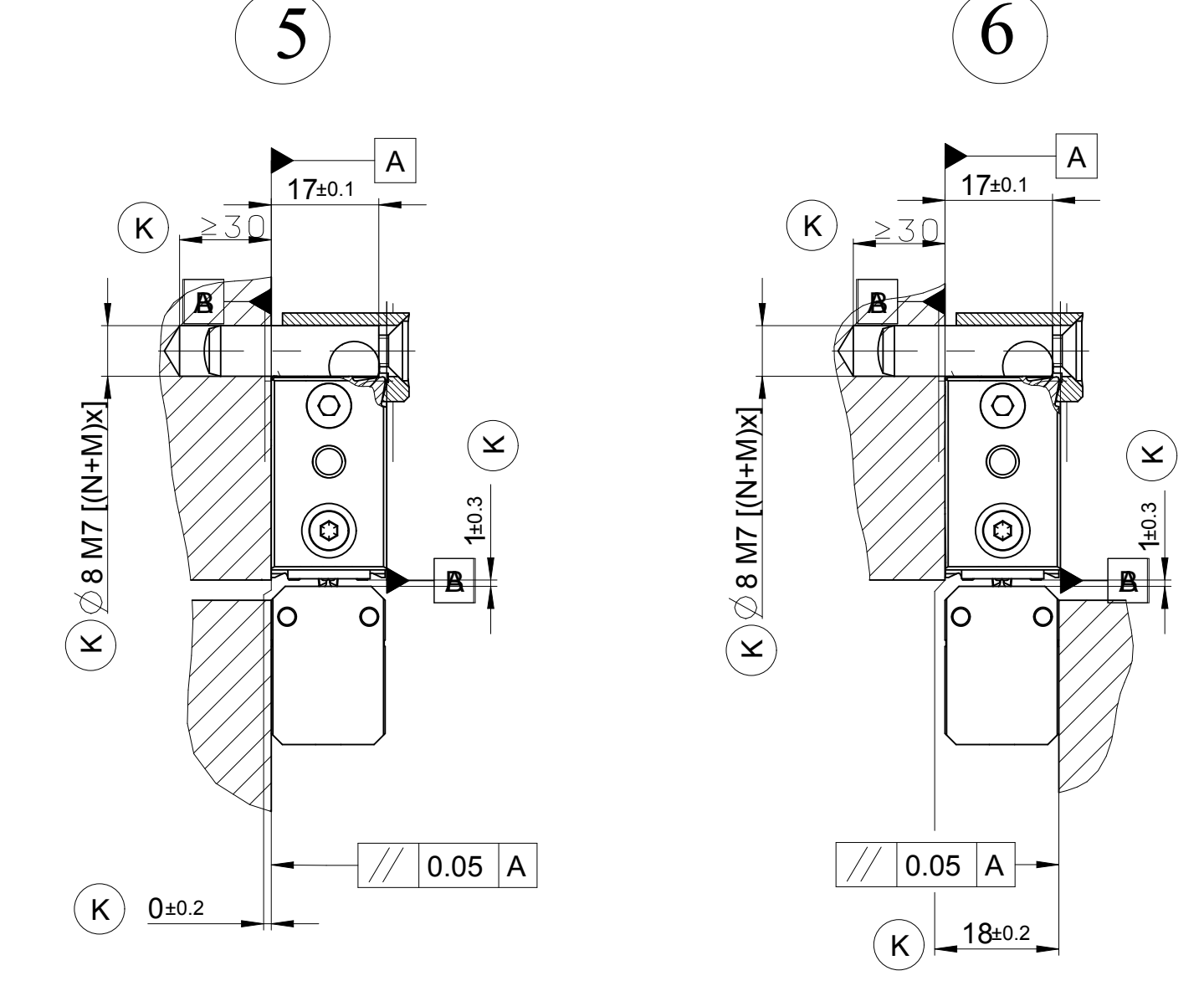


wenn N=1 nur Zylinderstift ISO 8734-8 (Spannelement entfällt)  
if N=1 only cylinder bolt ISO 8734-8 (without clamping element)



**Montagemöglichkeiten mit Befestigungsendstück für M8 (12A) und Spannelement / Mounting possibilities with mounting block for M8 (12A) and clamping element**

**Kabelausgang rechts**



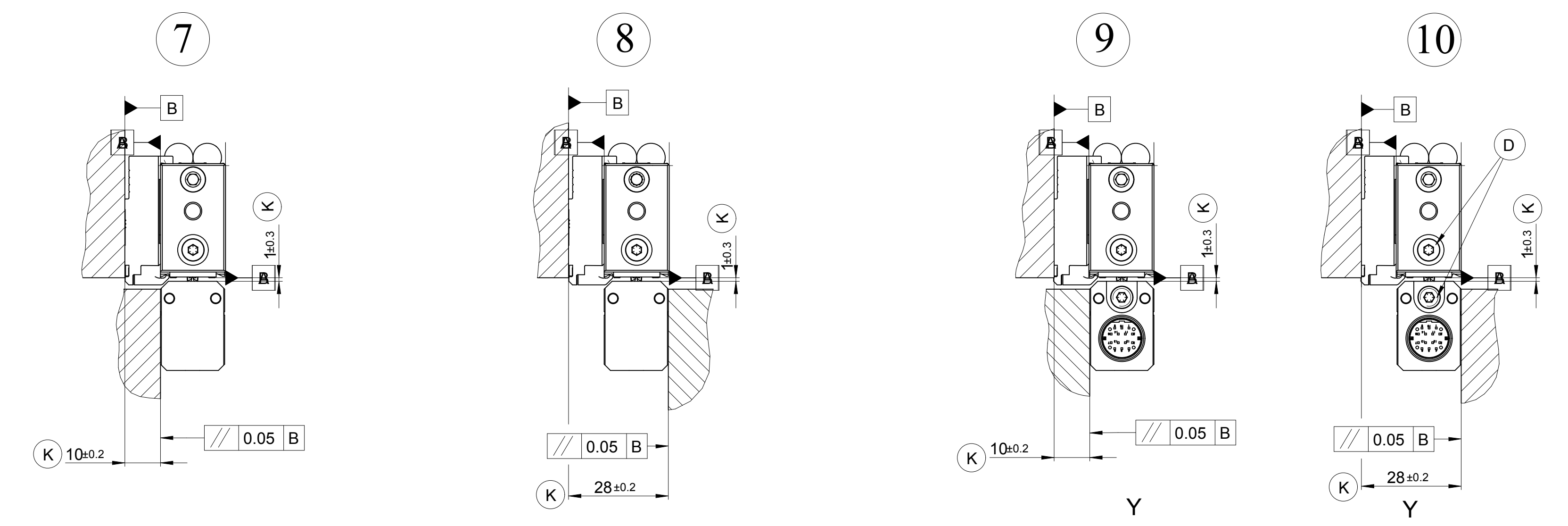
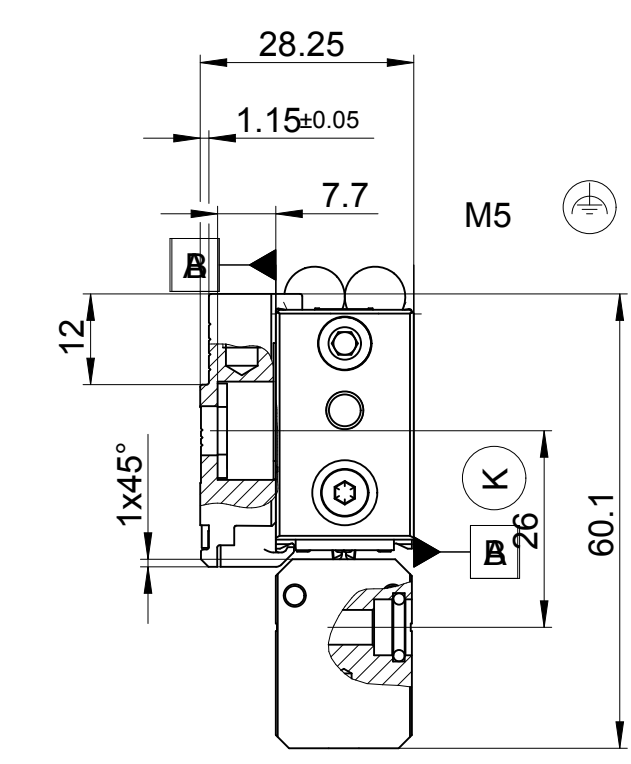
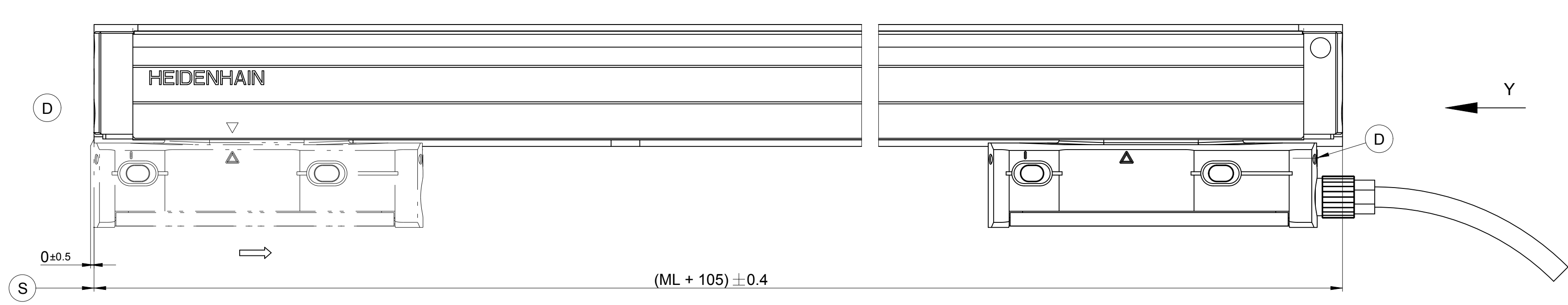
ML	N	M	a	b
25 ... 570	0	0	-	-
620 ... 1240	1	2	80	(ML + 138 - 2a) / 2
1340 ... 1740	3	0	b	(ML + 138) / (n + 1)
1840 ... 2040	4	0	b	(ML + 138) / (n + 1)

N = Anzahl der Spannelemente (befestigt mit beiliegenden Zylinderstiften)  
Number of clamping elements (mounted with enclosed clamping elements)  
M = Anzahl der Zylinderstifte ISO 8734-8 (ohne Spannelemente)  
Number of cylinder bolts ISO 8734-8 (without clamping elements)

**Montagemöglichkeiten mit Montageschiene / Mounting possibilities with mounting spar**

**Anschlussmaße Montageschiene siehe D800615 / For mounting dimensions of mounting spar see D800615**

**Endstück 11A**



- ①...⑩ = Montagemöglichkeiten
- F = Maschinenführung
- P = Messpunkte zum Ausrichten
- K = Kundenseitiges Anschlussmaß
- B = Kabelanschluss
- D = Druckluftanschluss
- S = Beginn der Messlänge ML (=20mm absolut)
- = Bewegungsrichtung der Abtasteinheit für Ausgangseinrichtung gemäß Schnittstellen-Beschreibung
- ML = Messlänge

- Mounting options
- Machine guideway
- Gauging points for alignment
- Required mating dimensions
- Cable connection usable at either end
- Compressed air inlet usable at either end
- Beginning of measuring length ML (=20mm absolut)
- Direction of scanning unit motion for output signals in accordance with interface description
- Measuring length