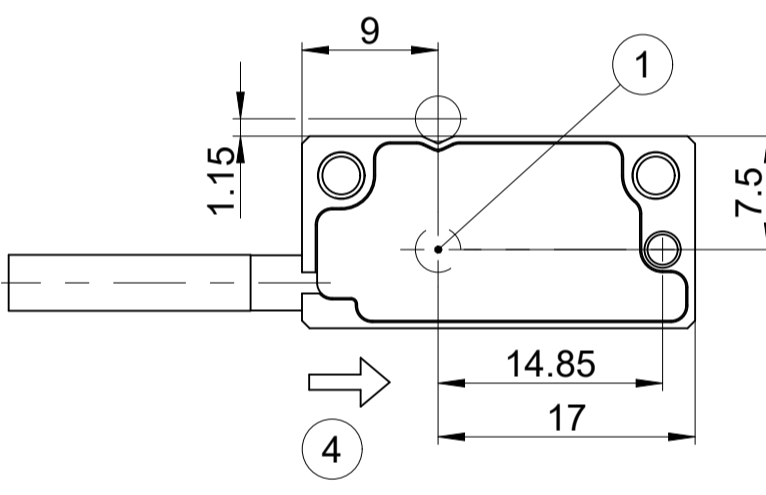
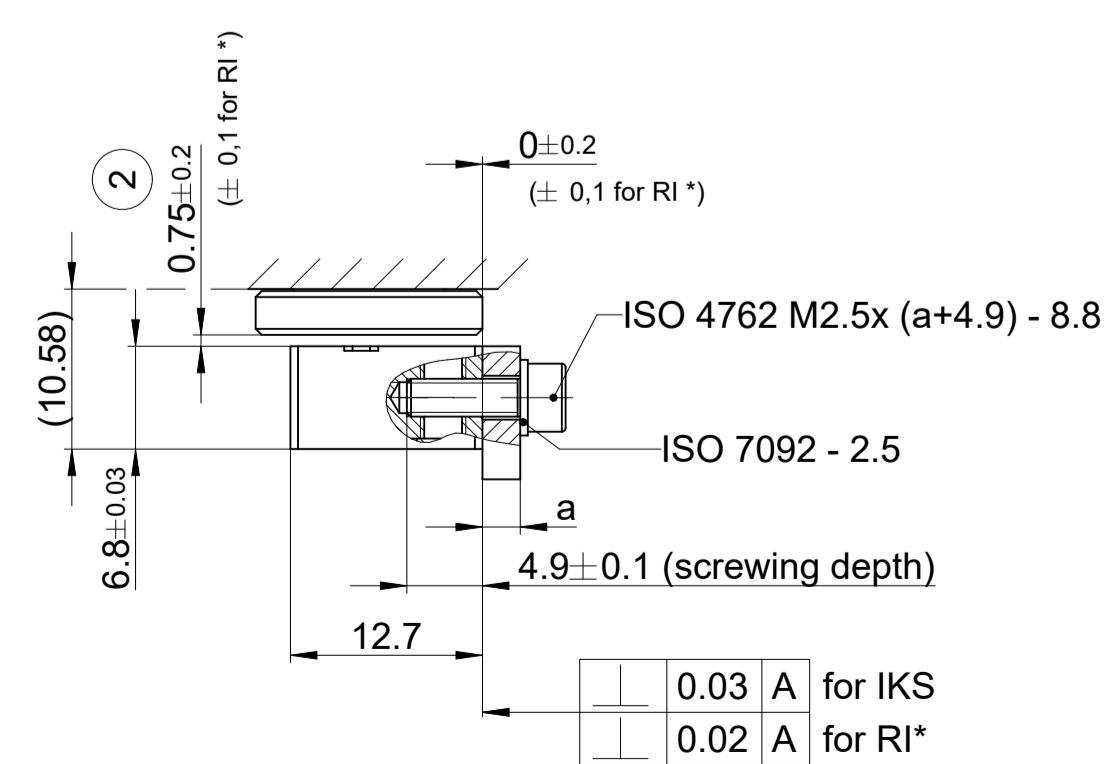
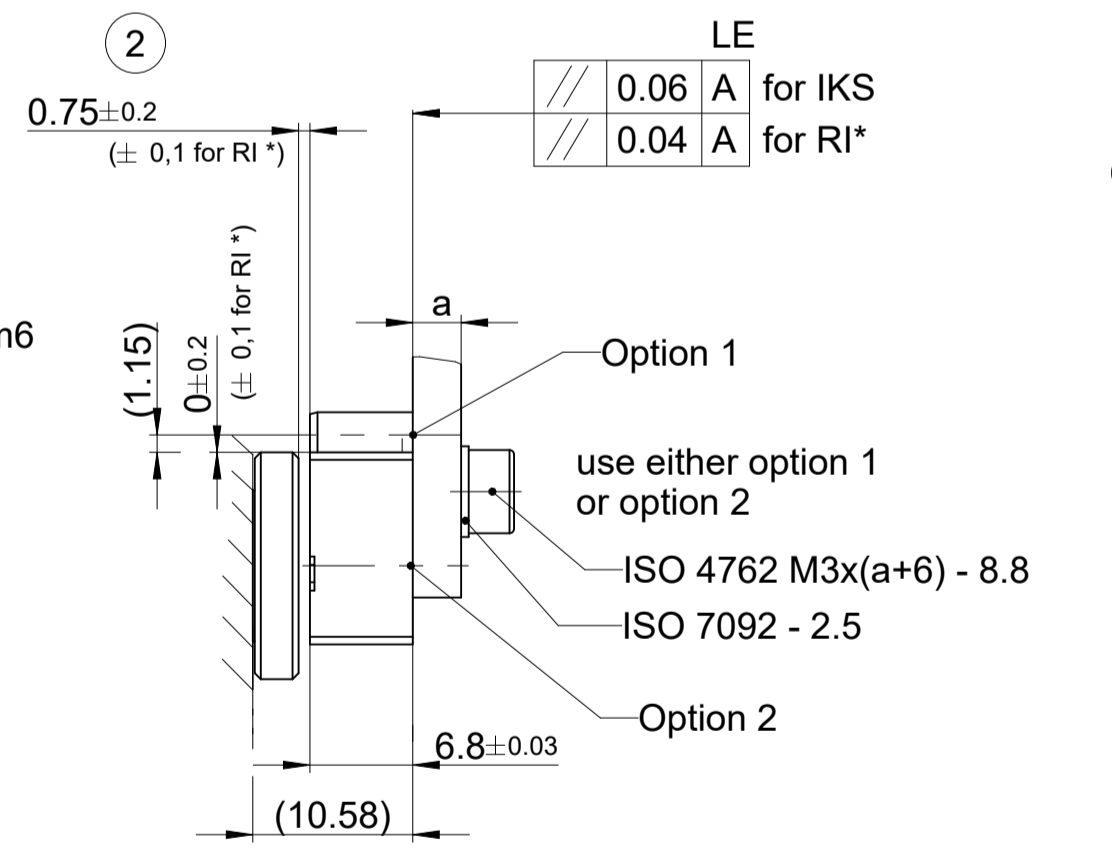
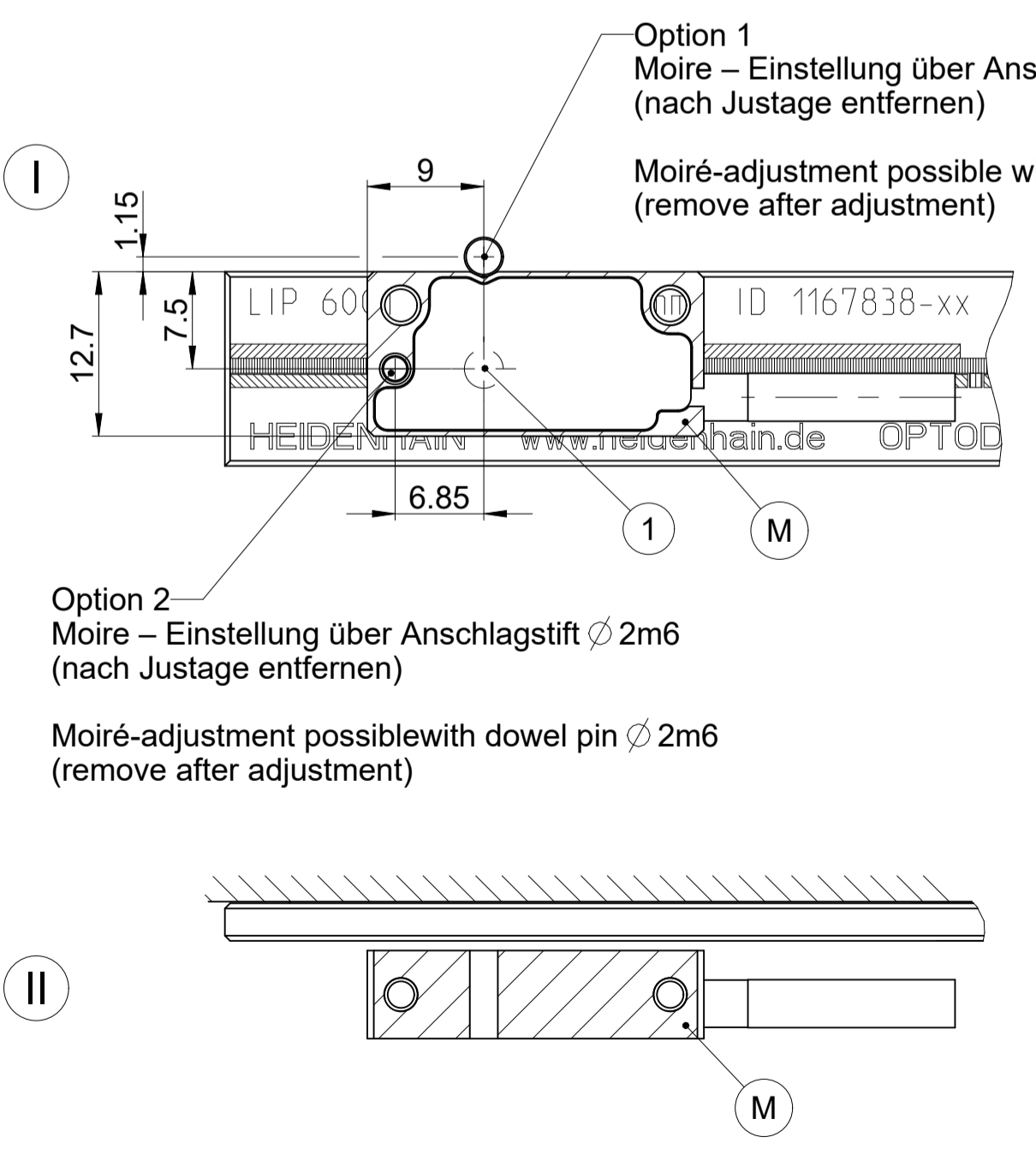


Kabelausgang links; weitere Alternativen siehe D1223068  
Cable outlet left side; for further alternatives see D1223068



Möglichkeiten für die Befestigung des Abtastkopfes  
Possibilities for mounting the scanning head



Position Anschlagstifte  
Position stop pins

Hinweis: Maßstab immer nur einseitig anschlagen  
Note: Only use one bench edge exclusively

bevorzugte Anschlagseite  
recommended bench edge

ML ≤ 2040

alternative Anschlagseite  
alternative bench edge

bevorzugte Anschlagseite  
recommended bench edge

ML > 2040

alternative Anschlagseite  
alternative bench edge

- I II = Montagemöglichkeiten
- \* = Maximale Änderung im Betrieb
- F = Maschinenführung
- G = Dosierlänge
- H = Homing Schaltflanke
- Ho = Schaltpunkt Homing
- K = Klebstoff
- L = Maßstablänge
- LI = Limit Schaltflanken
- M = Montagefläche
- R = Referenzmarken-Lage
- S = Beginn der Messlänge ML
- 1 = Optische Mitte
- 2 = Montageabstand Abtastkopf zu Maßstab
- 3 = Anschlagfläche Maßstab
- 4 = positive Bewegungsrichtung des Abtastkopfes für Ausgangssignale gem. Schnittstellenbeschreibung

- = Mounting options
- = max. change during operation
- = Machine guideway
- = Dosage length
- = Homing edges
- = Homing position
- = Adhesive
- = Scale length
- = Limit edge
- = mounting surface
- = reference-mark position
- = Beginning of measuring length ML
- = Optical center
- = Mounting gap
- = Stop surface scale
- = Positive direction of scanning head movement for output signals in accordance with interface description

- LI1/LI2 = Limit-Positionen, einstellbar
- ML = Messlänge
- r = Abstand zur Referenzmarke (abhängig von Maßstabsvariante)
- RI = Referenzimpuls
- IKS = Inkrementalspur

- = Limit positions adjustable
- = Measuring length
- = Distance to reference mark (dependent on the scale variant)
- = Reference pulse
- = Incremental track

Verfügbare Kabelstecker siehe D1223068  
Available connectors see D1223068

Original drawing		ID number: C093382-05	
Scale: 2:1		Change No. C093382-05	
Format: A1		Phase: Serie	
Dimensions in mm		Tolerierung nach DIN ISO 8015 Tolerances as per DIN ISO 8015	
LIP 60x1 geklebt LIP 60x1 with adhesive tape		Allgemeintol. ISO 2768-mH 36mm:±0.2 General tol. ISO 2768-mH 36mm:±0.2	
Anschlussmaße / Mating Dimensions		The reproduction, distribution and utilization of this document as well as the communication of its contents to others without express authorization is prohibited. Offenders will be held liable for the payment of damages. All rights reserved in the event of the grant of a patent, utility model or design. (ISO 18015)	
HEIDENHAIN DR. JOHANNES HEIDENHAIN GmbH 83301 Traunreut, Germany		Version   Revision   Sheet   Page 1   1   1   1	
D1156702-03-A-01		Document number	