

Für Funktionale Sicherheit und Fehlerausschluss Hohlwelle obligatorisch
Obligatory for functional safety and mechanical fault exclusion

Materialvorgaben nach den "Allgemeinen mechanischen Hinweisen" im aktuellen Drehgeberkatalog (D349529)
Material specification according to "General mechanical information" in the current "Rotary Encoders" brochure (ID D349529)

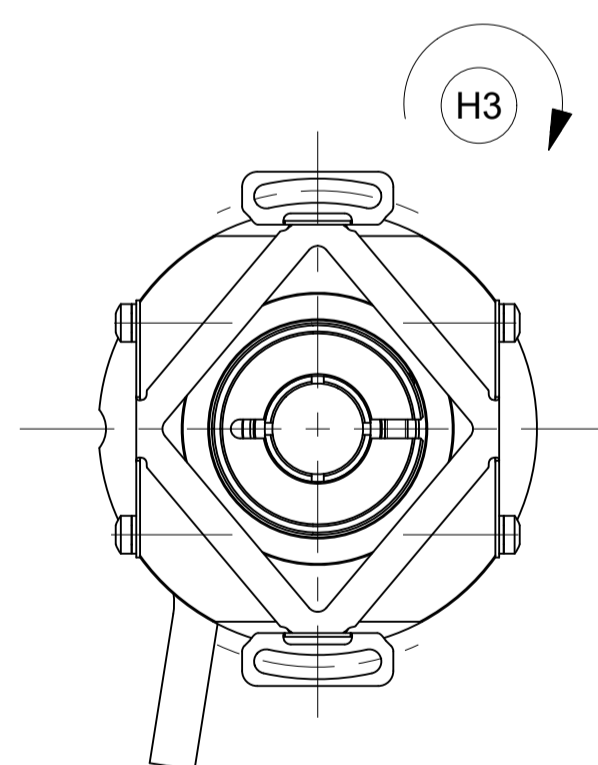
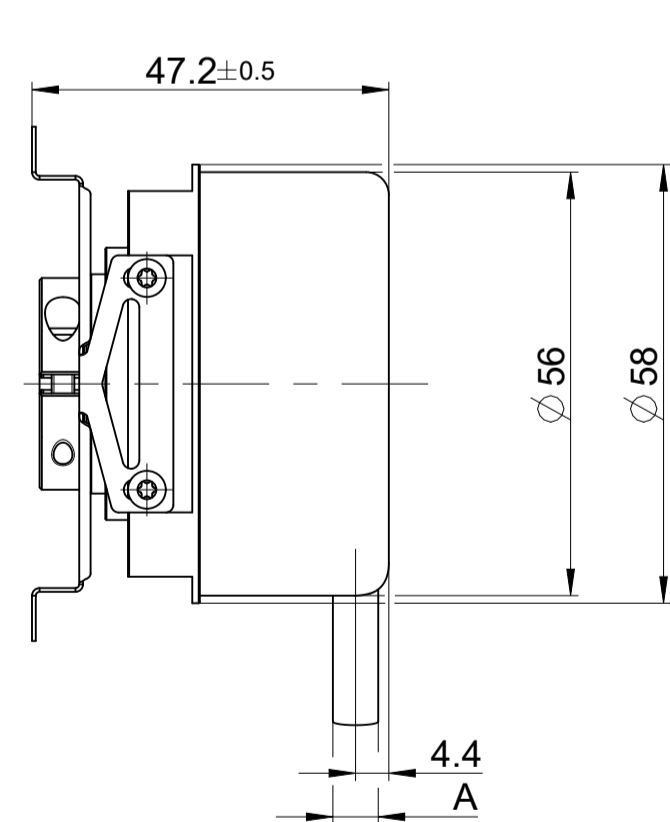
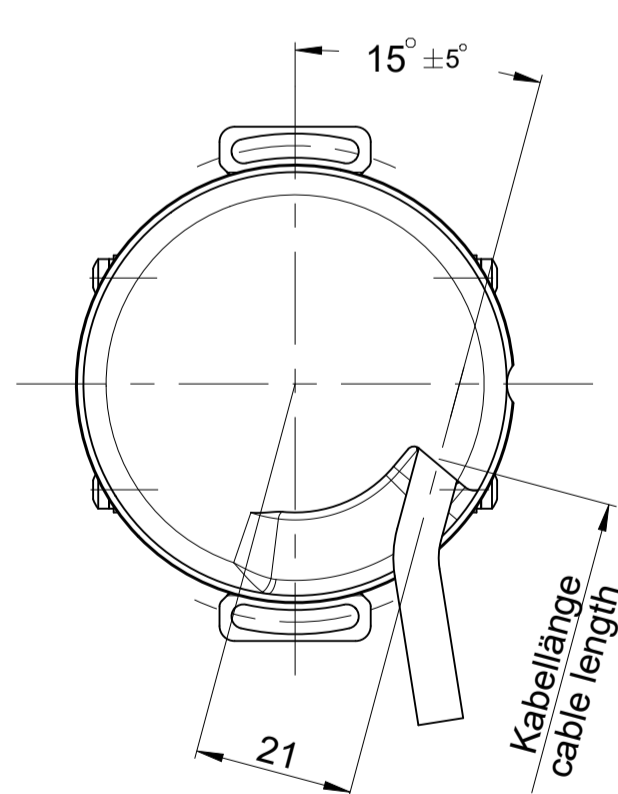
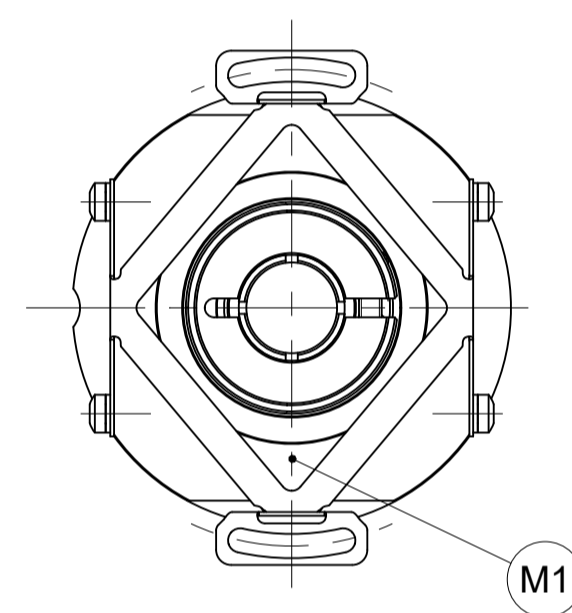
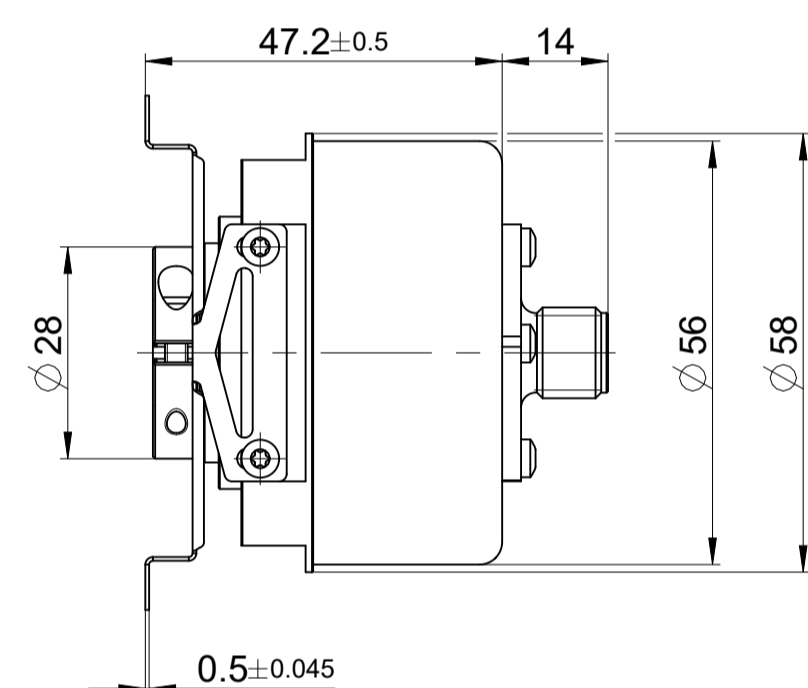
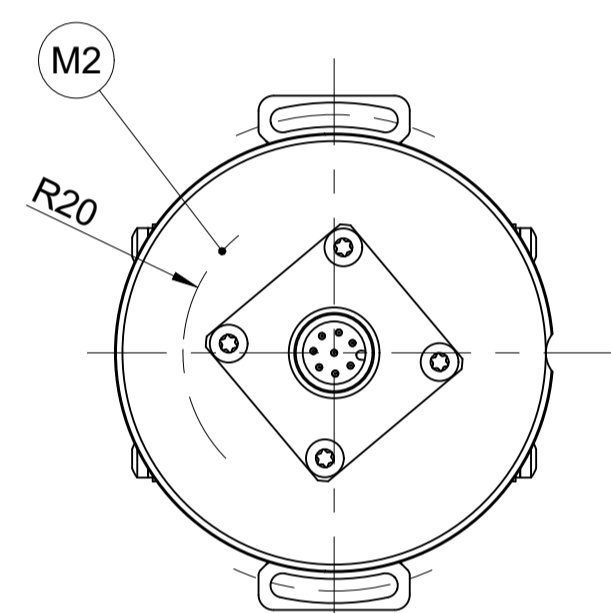
	Kundenwelle customer shaft	Kundenstator mating stator
Material material	Stahl steel	Aluminium aluminium

Statorkupplungsbefestigung / Mounting stator coupling
Für Funktionale Sicherheit und Fehlerausschluss obligatorisch / Obligatory for Functional Safety and Fault exclusion

4 Schrauben M3 DIN EN ISO 4762 - 8.8 - MKL mit stoffschlüssiger Losdrehicherung nach DIN 267-27 und jeweils einer flachen Scheibe nach DIN EN ISO 7092
Aushärtezeit der stoffschlüssigen Losdrehicherung beachten
Anzugsmoment 1±0,06Nm, Mindestinschraubtiefe 6mm

4 screws M3 DIN EN ISO 4762 - 8.8 - MKL with material bonding anti-rotation lock according to DIN 267-27 and plain washers according to DIN EN ISO 7092
Note the curing time for the material bonding anti-rotation lock
Tightening torque 1Nm±0,06Nm, minimal length of engagement 6mm

- A = Lagerung Kundenwelle
Bearings for customer shaft
- K = Kundenseitige Anschlußmaße
Required mating dimensions
- M1 = Messpunkt Arbeitstemperatur
Operating temperature measuring point
- M2 = Messpunkt Vibration
Vibration measuring point
- H1 = Klemmschraube mit Innensechsrund X8
Anzugsmoment 1,0±0,06 Nm
Fehlerausschluss bis max.
4 Wiederholerschraubungen gewährleistet
Locking screw with hexalobular recesses X8 torque 1,0±0,06 Nm fault exclusion guaranteed up to 4 repeated screwings
- H2 = Ausgleich von Montagetoleranzen und thermischer Ausdehnung, keine dynamische Bewegung
Compensation of mounting tolerances and thermal expansion, no dynamic motion
- H3 = Drehrichtung der Welle für Ausgangssignale gemäß Schnittstellenbeschreibung
Direction of shaft rotation according to interface description
- H4 = Fase am Gewindeanfang obligatorisch für Stoffschlüssige Losdrehicherung
Chamfer is obligatory at start of thread for materially bonding anti-rotation lock
- H5 = Minimal erforderlicher Einbauraum im Kupplungsbereich
Minimum required installation space at stator coupling
- H6 = Berührschutz nach EN 60529
Touch protection according to EN 60529



KABEA2	A
01	Ø4,5
02	Ø6
0D	Ø3,7
81	Ø6,8

68S	Ø12g7	Ø12H6	14
68T	Ø10g7	Ø10H6	14
WELLA1	D1	D2	KUPPA1

Original drawing		ERNEC/ECN/EQN 4xx WELLA1:68S/68T		ID number:	C055432-82
Scale	Format	ERNEC/ECN/EQN 4xx WELLA1:68S/68T		Change No.	055432-82
Dimensions in mm	1:1 A1	Anschlussmaße / Mating Dimensions		Phase	Serie
The reproduction, distribution and utilization of this document as well as the communication of its contents to others without express authorization is prohibited. Offenders will be held liable for the payment of damages. All rights reserved in the event of the grant of a patent, utility model or design. (ISO 15015)				Tolerances as per ISO 8015	
HEIDENHAIN DR. JOHANNES HEIDENHAIN GmbH 83301 Traunreut, Germany				General Tolerances ISO 2768-1:2008-mH ±0.2	
Released		Version Revision Sheet Page		23.02.2024	
D1155781-06-A-01		Document number		1 of 1	