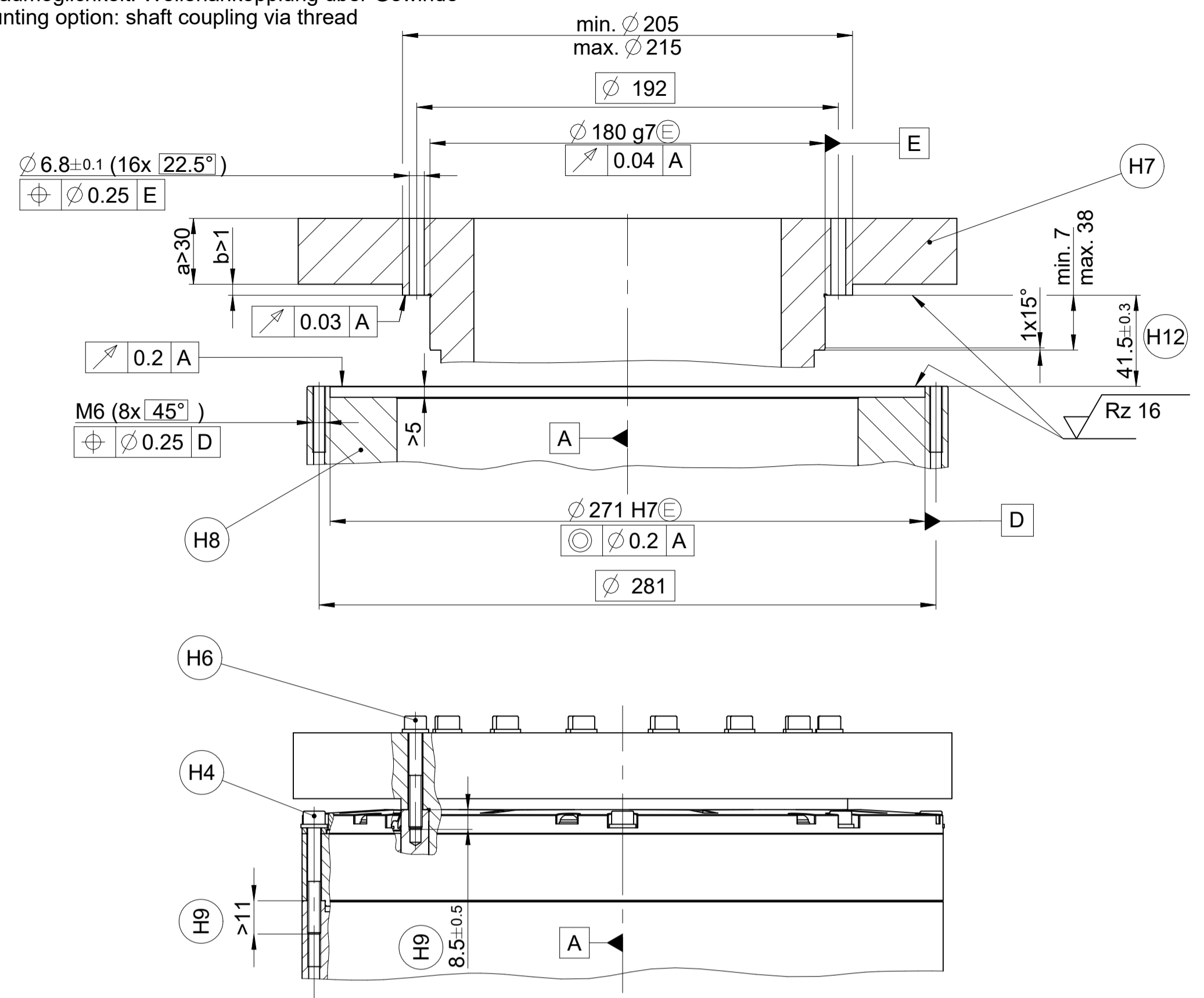
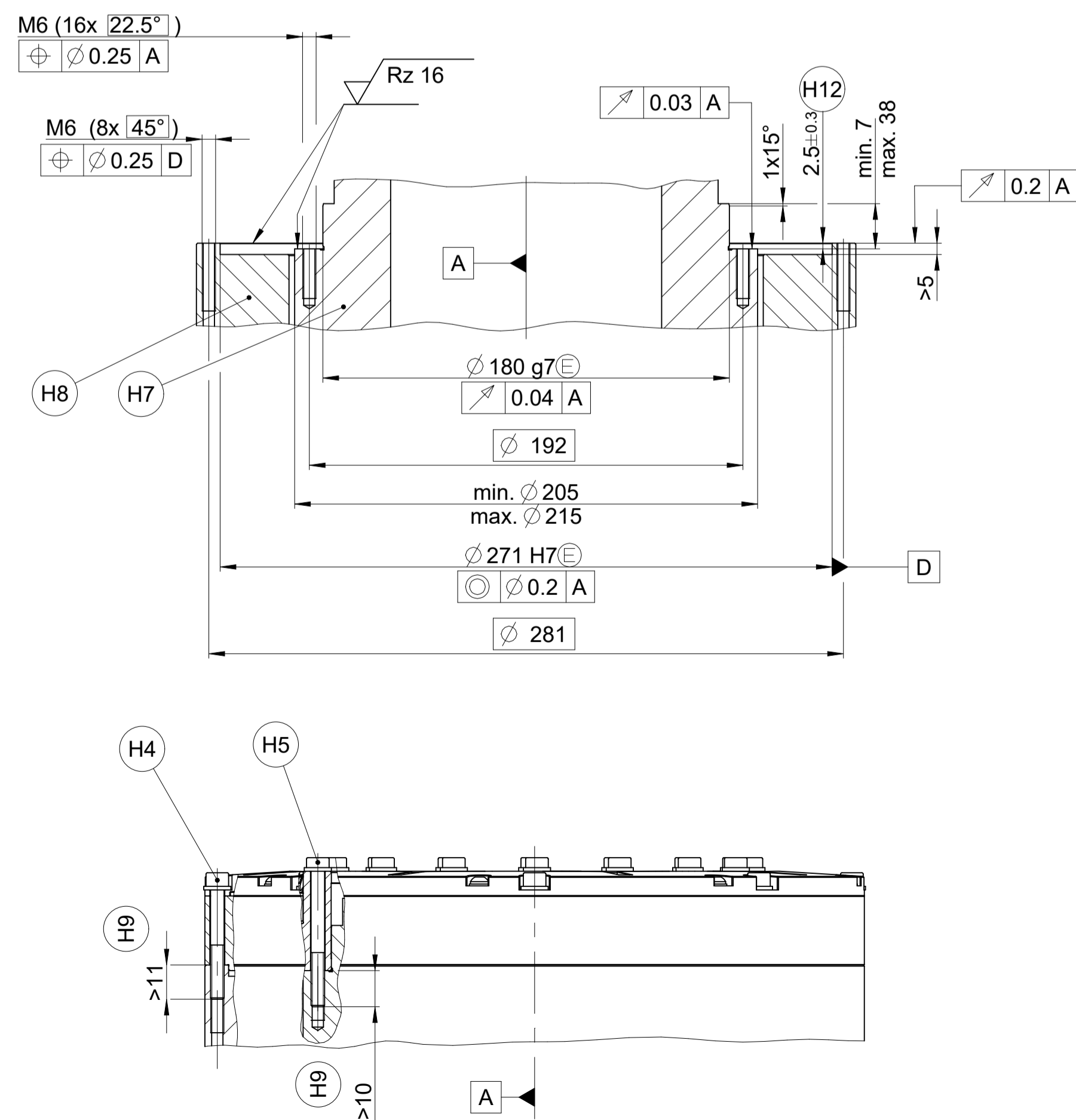


K Alternative Anbaumöglichkeit: Wellenankopplung über Gewinde
 Alternative mounting option: shaft coupling via thread



K Wellenankopplung über Durchgangsbohrung
 Shaft coupling via through hole



- A** = Lagerung Kundenwelle
Bearing of mating shaft
- K** = Kundenseitige Anschlussmaße
Required mating dimensions
- H1** = Drehrichtung der Welle für Ausgangssignal gemäß Schnittstellenbeschreibung
Direction of shaft rotating for output signals is described in interface description
- H2** = Druckluftanschluss
Compressed air inlet
- H3** = Kundenseitige Sperrfläche
customers restricted area
- H4** = Anziehdrehmoment der Zylinderschrauben M6x45 (8x): 7.0±0.42 Nm
Schraube: ISO 4762
Schraubenfestigkeitsklasse 8.8
Scheibe: ISO 7092-6-200HV
Stoffschlüssige Schraubenlosdreh Sicherung erforderlich
Tightening torque of the hexagon socked head cap screws M6x45 (8x): 7.0±0.42 Nm
Screw: ISO 4762
Screw property class 8.8
Washer: ISO 7092-6-200HV
Materially bonding anti-rotation lock necessary
- H5** = Anziehdrehmoment der Zylinderschrauben M6x55 (16x): 8.0±0.48 Nm
Schraube: ISO 4762
Schraubenfestigkeitsklasse 8.8
Scheibe: ISO 7092-6-200HV
Stoffschlüssige Schraubenlosdreh Sicherung erforderlich
Tightening torque of the hexagon socked head cap screws M6x55 (16x): 8.0±0.48 Nm
Screw: ISO 4762
Screw property class 8.8
Washer: ISO 7092-6-200HV
Materially bonding anti-rotation lock necessary
- H6** = Anziehdrehmoment der Zylinderschrauben M6x(a+b+8.5+1.6) (16x): 8.0±0.48 Nm
Schraube: ISO 4762
Schraubenfestigkeitsklasse 8.8
Scheibe: ISO 7092-6-200HV
Stoffschlüssige Schraubenlosdreh Sicherung erforderlich
Tightening torque of the hexagon socked head cap screws M6x(a+b+8.5+1.6) (16x): 8.0±0.48 Nm
Screw: ISO 4762
Screw property class 8.8
Washer: ISO 7092-6-200HV
Materially bonding anti-rotation lock necessary
- H7** **H8** = Material: siehe Produktinformation Dokument ID 1151754
Material: see Product Information Document ID 1151754
- H9** = Einschraublänge
Screw penetration
- H10** = Kabelabstützung
Cable support
- H11** = Markierung der 0° Position ±2.5°
0° position index ±2.5°
- H12** = Toleranzangabe beinhaltet Montagetoleranzen und thermische Ausdehnung. Keine dynamische Bewegung zulässig.
Tolerance specification includes mounting tolerances and thermal expansion. No dynamic movement permitted.
- H13** = Separates Adapterkabel
Separate adapter cable

Montageflächen und Gewinde müssen sauber, grat- und lackfrei sein;
 nach Messgeräteaustausch Gewinde nachschneiden

The mounting surfaces and threads must be clean and free of burrs and paint;
 after removing the angle encoder, recut the threads

Original drawing		RCN 6xxx		ID number:	C195489-25
Scale		RCN 6xxx		Change No.	
Format		Anschlussmaße / Mating Dimensions		Phase:	Serie
Dimensions in mm		1:1 A1		Tolerances as per ISO 8015	
				General Tolerances ISO 2768-1989-mH ±0.2	
The reproduction, distribution and utilization of this document as well as the communication of its contents to others without express authorization is prohibited. Offenders will be held liable for the payment of damages. All rights reserved in the event of the grant of a patent, utility model or design. (ISO 18015)					
HEIDENHAIN		DR. JOHANNES HEIDENHAIN GmbH		Released:	26.06.2026
83301 Traunreut, Germany		Version / Revision / Sheet / Page		D1147120-08-A-01	
				1 of 1	