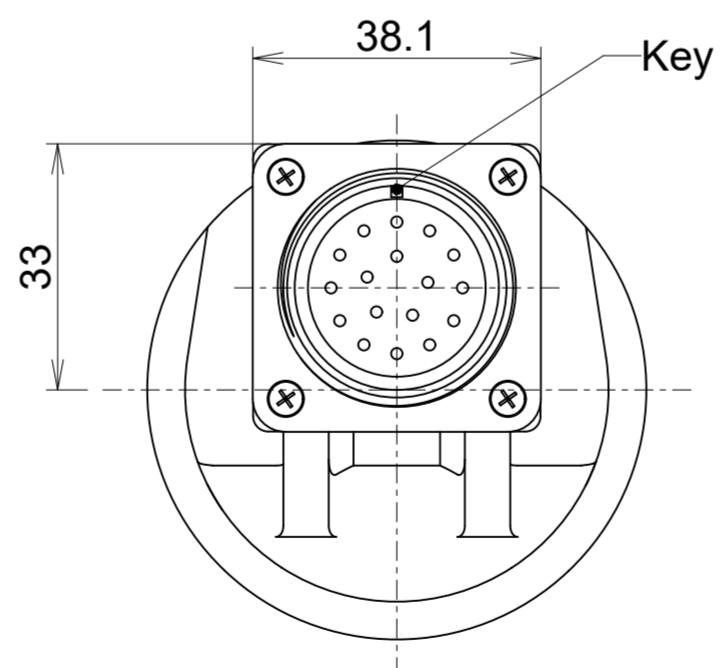
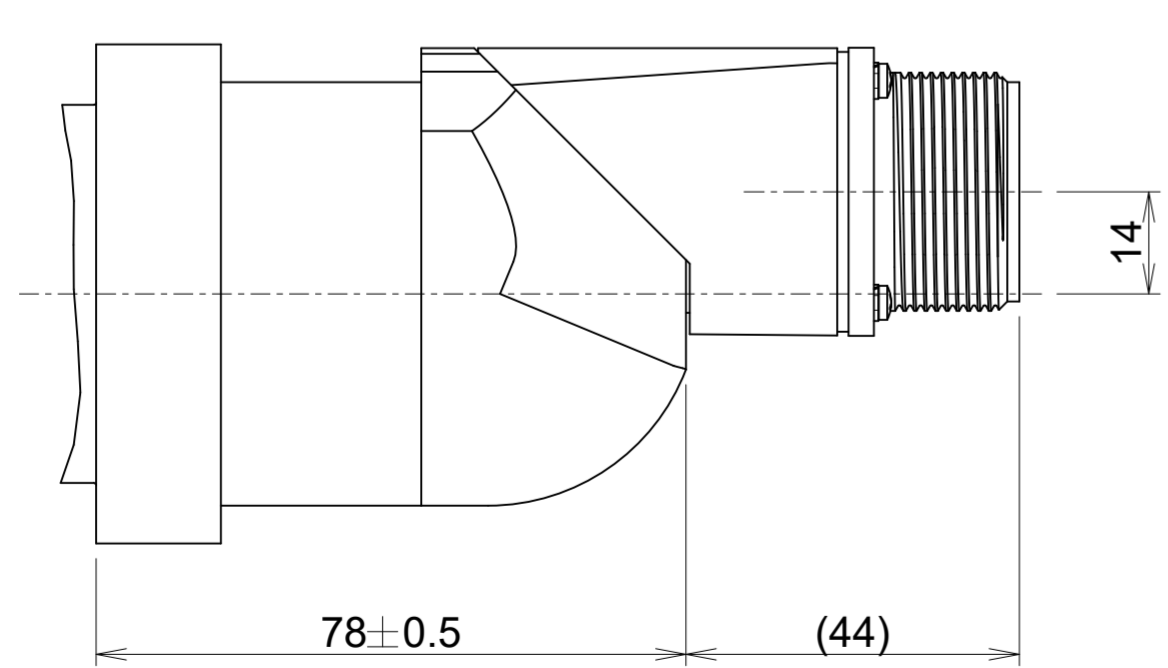
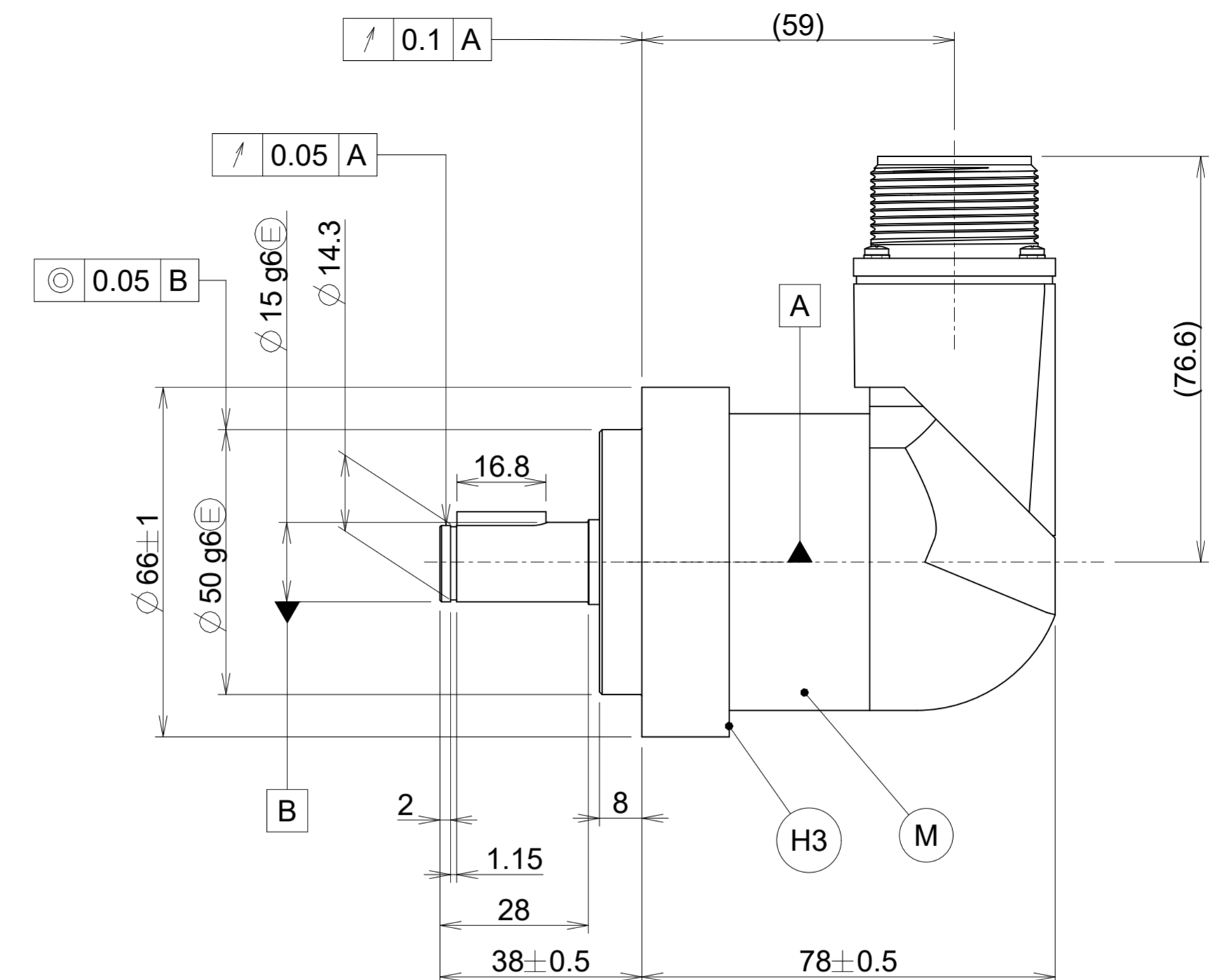
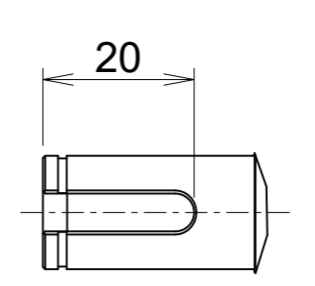
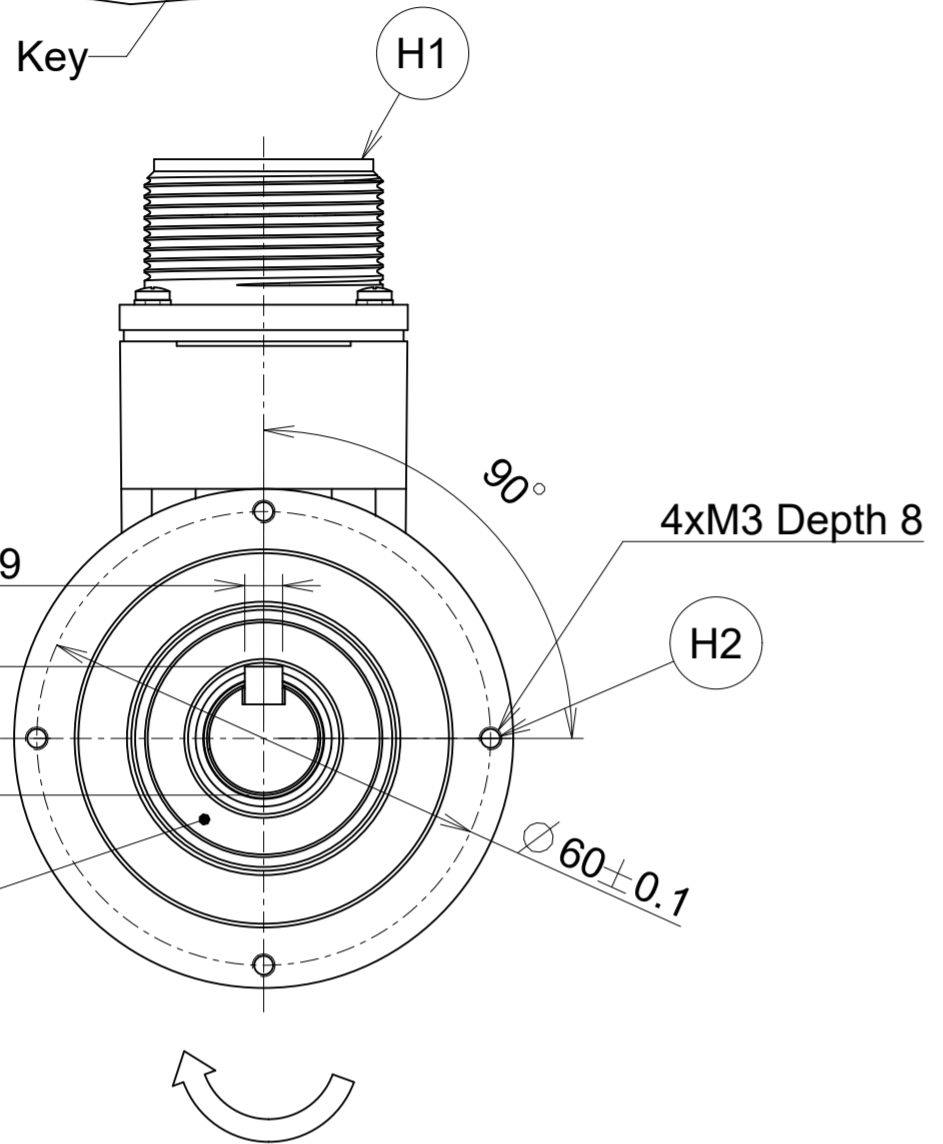
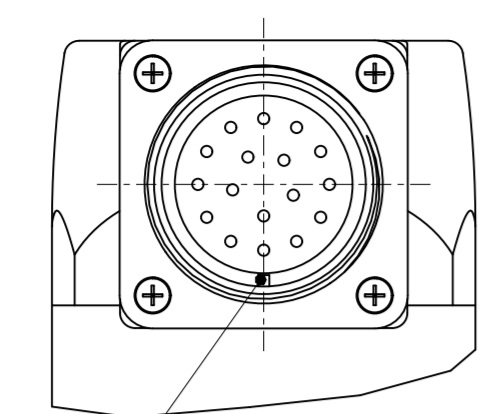


1 2 3 4 5 6 7 8 9 10 11 12

A B C D E F G H



- A = Bearing
- M = Measuring point for operation temperature.
- H1 = Flange socket (Canon type 3102-20-29P)
Tightening torque 7.4 ± 0.5 Nm
- H2 = e.g. 4x screw, M3, ISO 4762-8.8-MKL
Width A/F 2.5, Tightening torque 0.7 ± 0.1 Nm
- H3 = Vibration measuring point.
- = Direction of shaft rotation for output signals as per the interface description.

0XA	55A	4IS17
WELLA1	FOKAA1	ANELA1

Original drawing		Scale		Format		ROD 600		Mating Dimensions		ID number:			
1/1		A2								C183986-55			
Dimensions in mm										Serial production			
										Tolerances as per ISO 8015			
										General Tolerances ISO 2768:1989-mH ± 6 mm: ± 0.2			
The reproduction, distribution and utilization of this document as well as the communication of its contents to others without express authorization is prohibited. Offenders will be held liable for the payment of damages. All rights reserved in the event of the grant of a patent, utility model or design. (ISO 16016)													
HEIDENHAIN						Released		Version		Revision		Sheet	
												Page	
						D1145498-02 - A-01							
						Document number							

1 2 3 4 5 6 7 8

A B C D E F G H

1 of 1