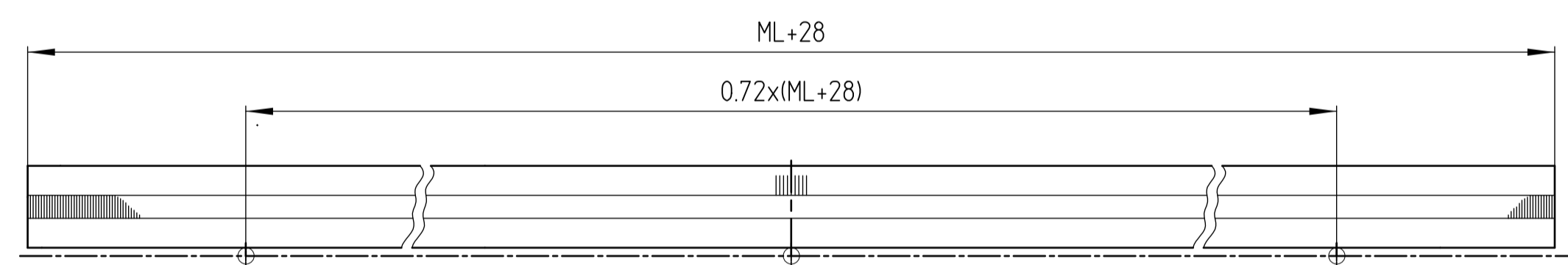
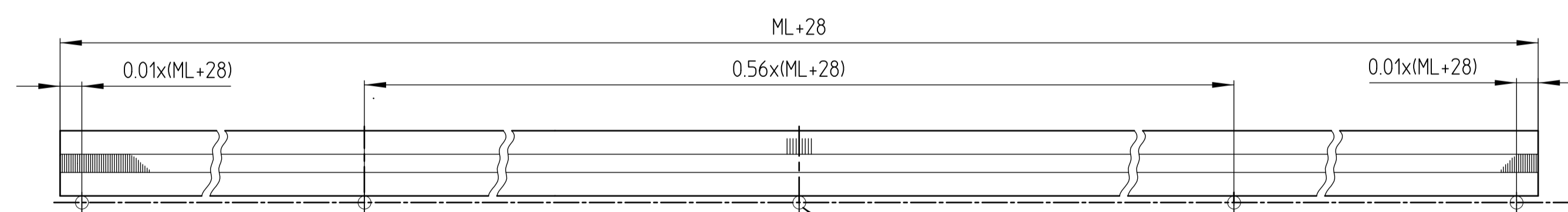


Position Anschlagstifte
Position stop pins

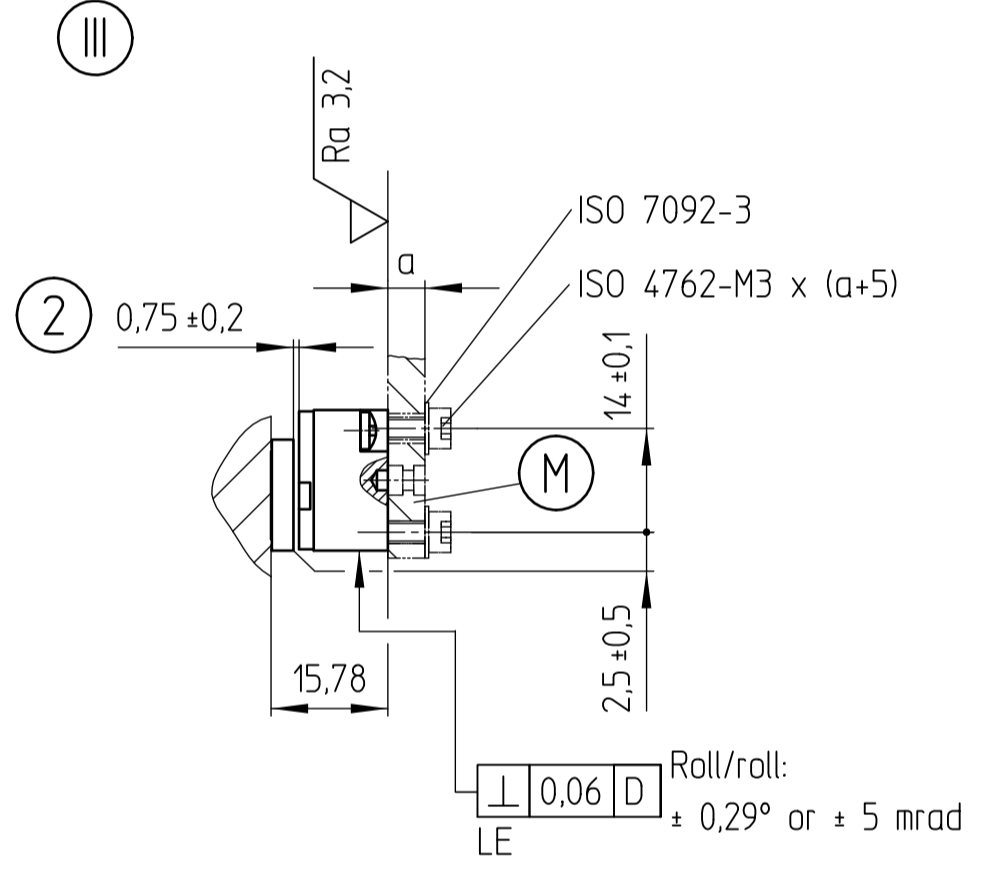
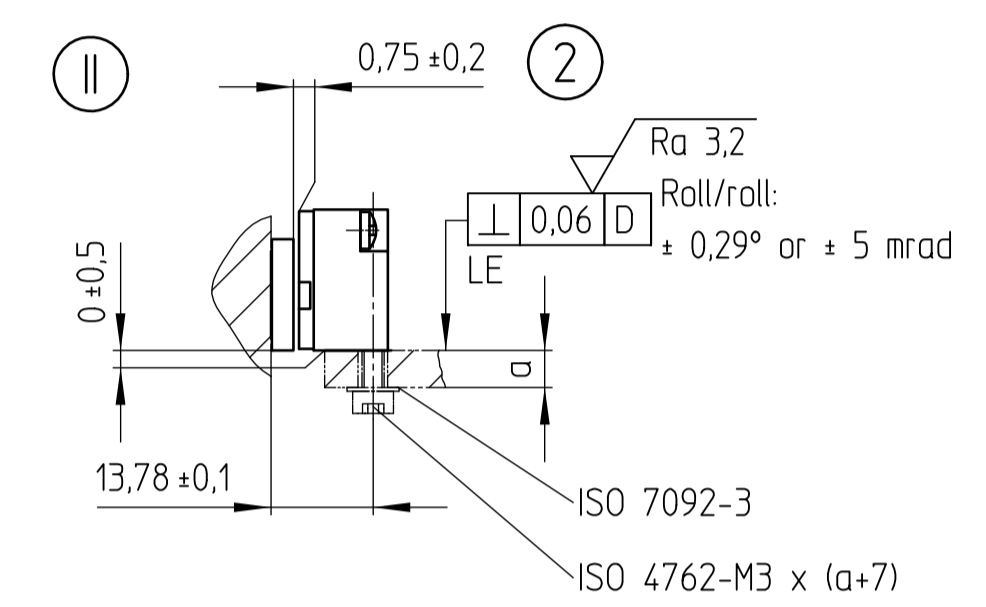
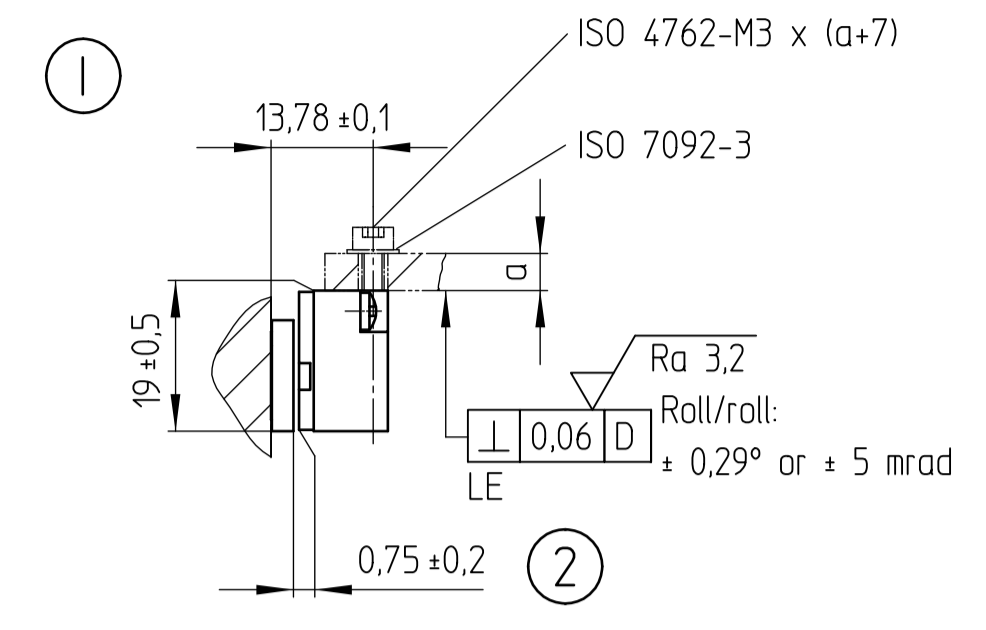
ML ≤ 2040



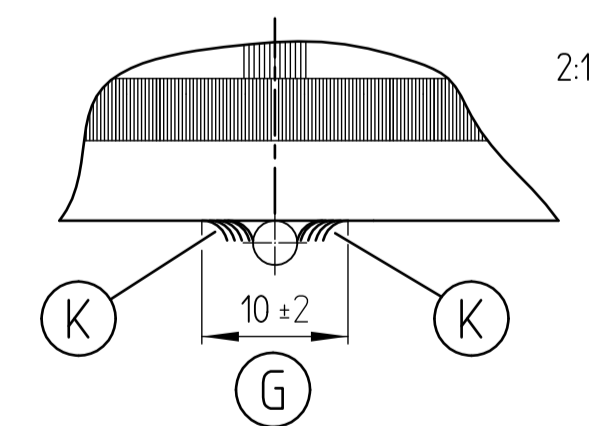
ML > 2040



Empfehlung/Recommendation: Ø3



Bei mittigem Anschlagstift
With stop pin at center



- I II III = Montage-Möglichkeiten
- F = Maschinenführung
- * = max. Änderung bei Betrieb (IKS: Inkrementalspur, RI: Referenzmarkenspur)
- (S) = Beginn der Messlänge ML
- (R) = Referenzmarken-Lage LIDA 4x3
- (C) = Referenzmarken-Lage LIDA 4x3C
- (L) = Maßstablänge
- (A) = Auslesemagnet für Limit-Schalter
- (M) = Montagefläche für Abtastkopf III
- (K) = Klebstoff
- (G) = Dosierlänge
- (1) = Funktionsanzeige
- (2) = Abtastspalt
- (3) = Anschlagfläche Maßstab
- (4) = Bewegungsrichtung der Abtasteinheit für Ausgangssignale gemäß Schnittstellen-Beschreibung

- Mounting option
- Machine guideway
- max. change during operation
- (IKS: incremental-track, RI: reference-pulse-track)
- Beginning of measuring length ML
- Reference mark position LIDA 4x3
- Reference mark position LIDA 4x3C
- Scale length
- Selector magnet for limit switch
- Mounting surface for scanning head III
- Adhesive
- Dosage length
- Status display
- Scanning gap
- Stop surface scale
- Direction of scanning unit motion for output signals in accordance with interface description

Original drawing		LIDA 4x3		iNumber:	
Scale	Formal	A1		Change No.	C000210-34
Dimensions in mm	1:1	Anschlussmaße		Phase	Serie
Tolerenzen nach DIN ISO 8015				Tolerances as per DIN ISO 8015	
Allgemeintoleranz ISO 2768-mH 16mm ± 0.2				General tolerances ISO 2768-mH 16mm ± 0.2	
The reproduction, distribution and utilization of this document as well as the communication of its contents to others without express authorization is prohibited. Offenders will be held liable for the payment of damages. All rights reserved in the event of the grant of a patent, utility model or design. (ISO 10161)					
HEIDENHAIN DR. JOHANNES HEIDENHAIN GmbH 83301 Traunreut, Germany				Document number D 1145427 - 02 - A - 01 1 of 1	