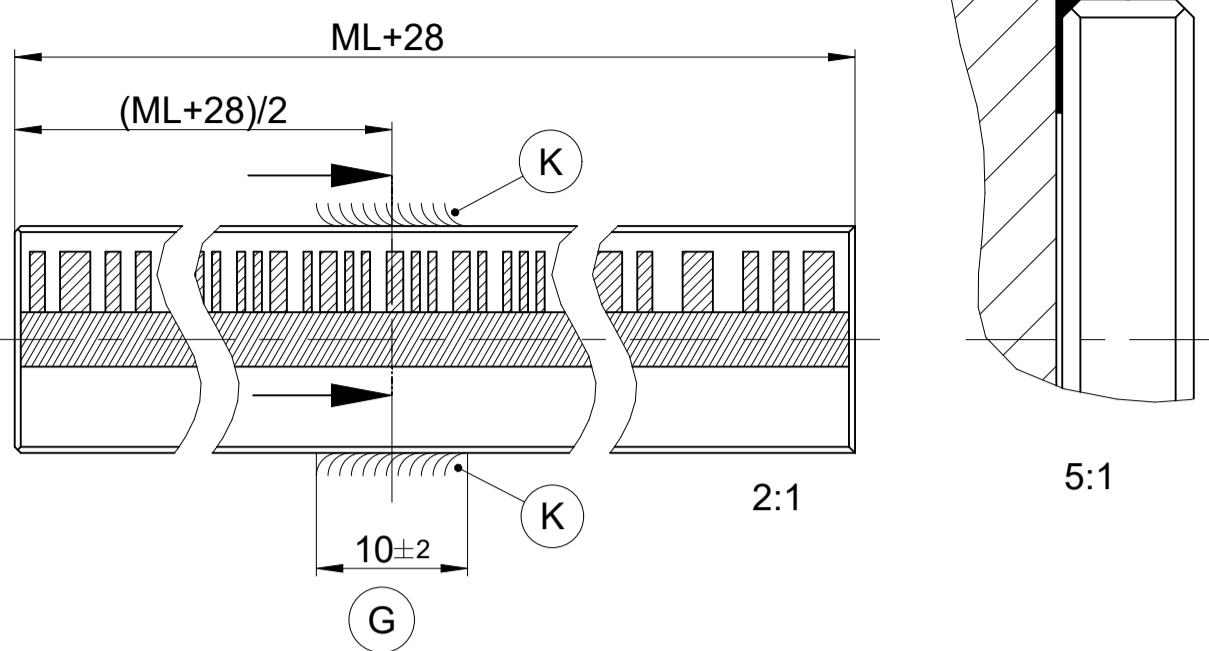
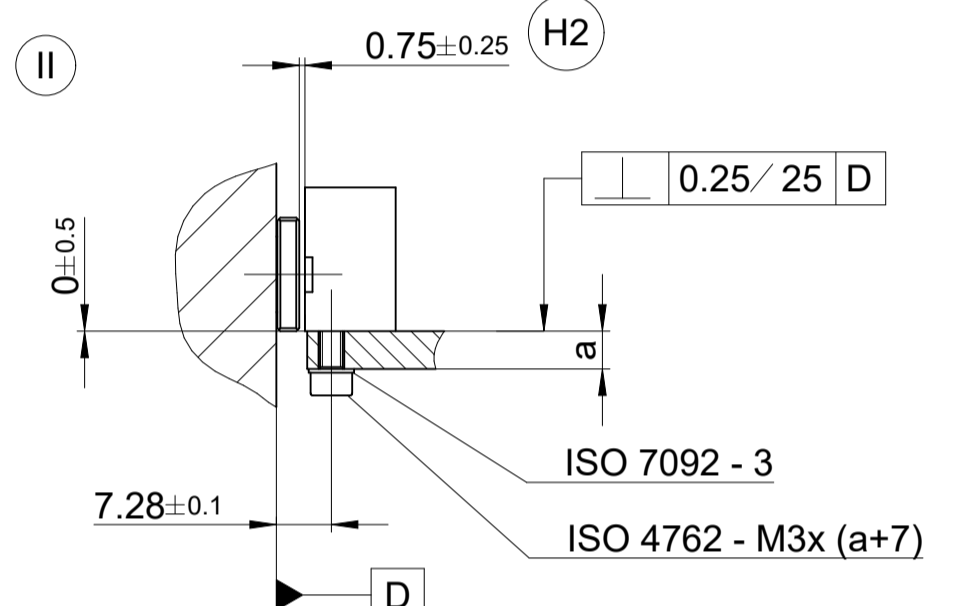
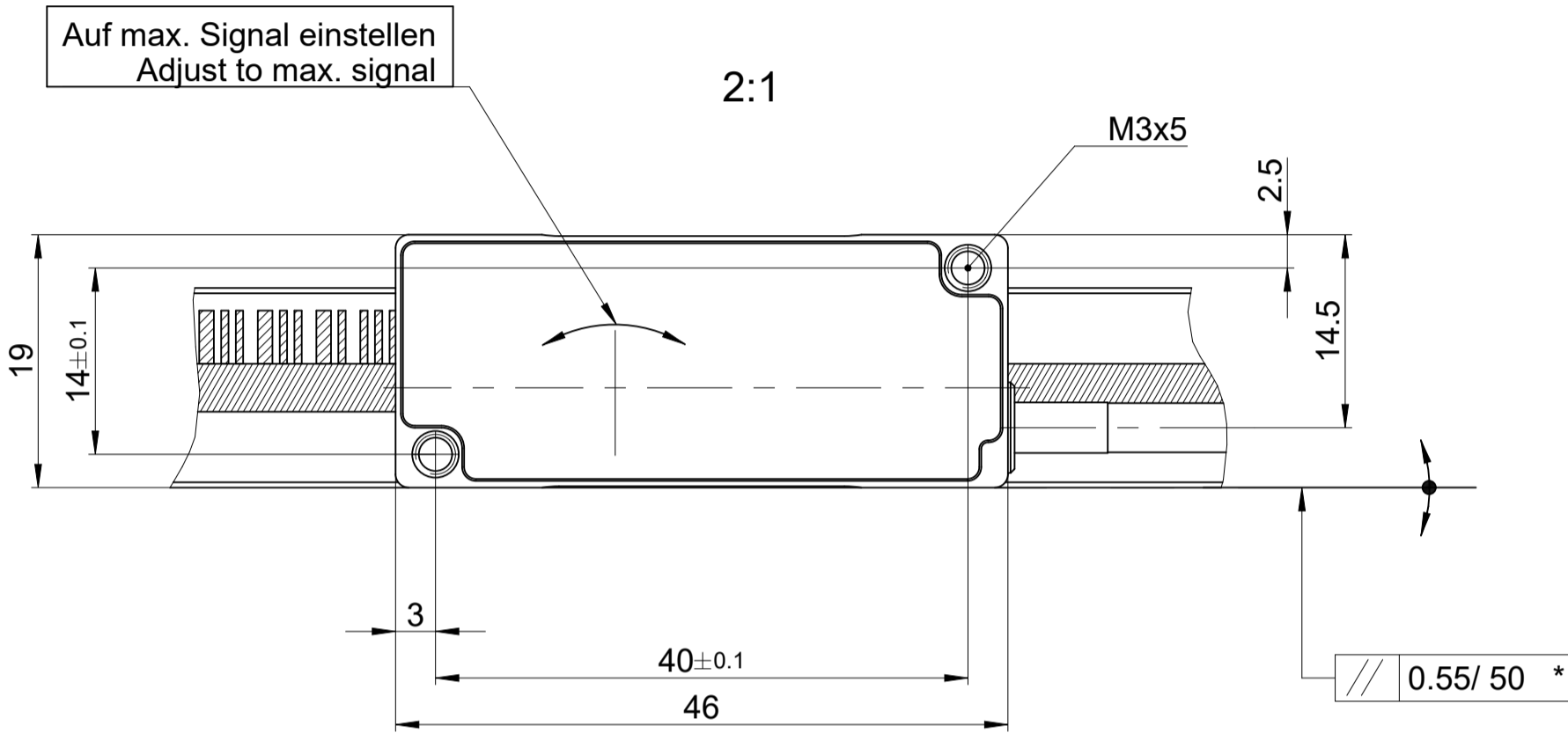
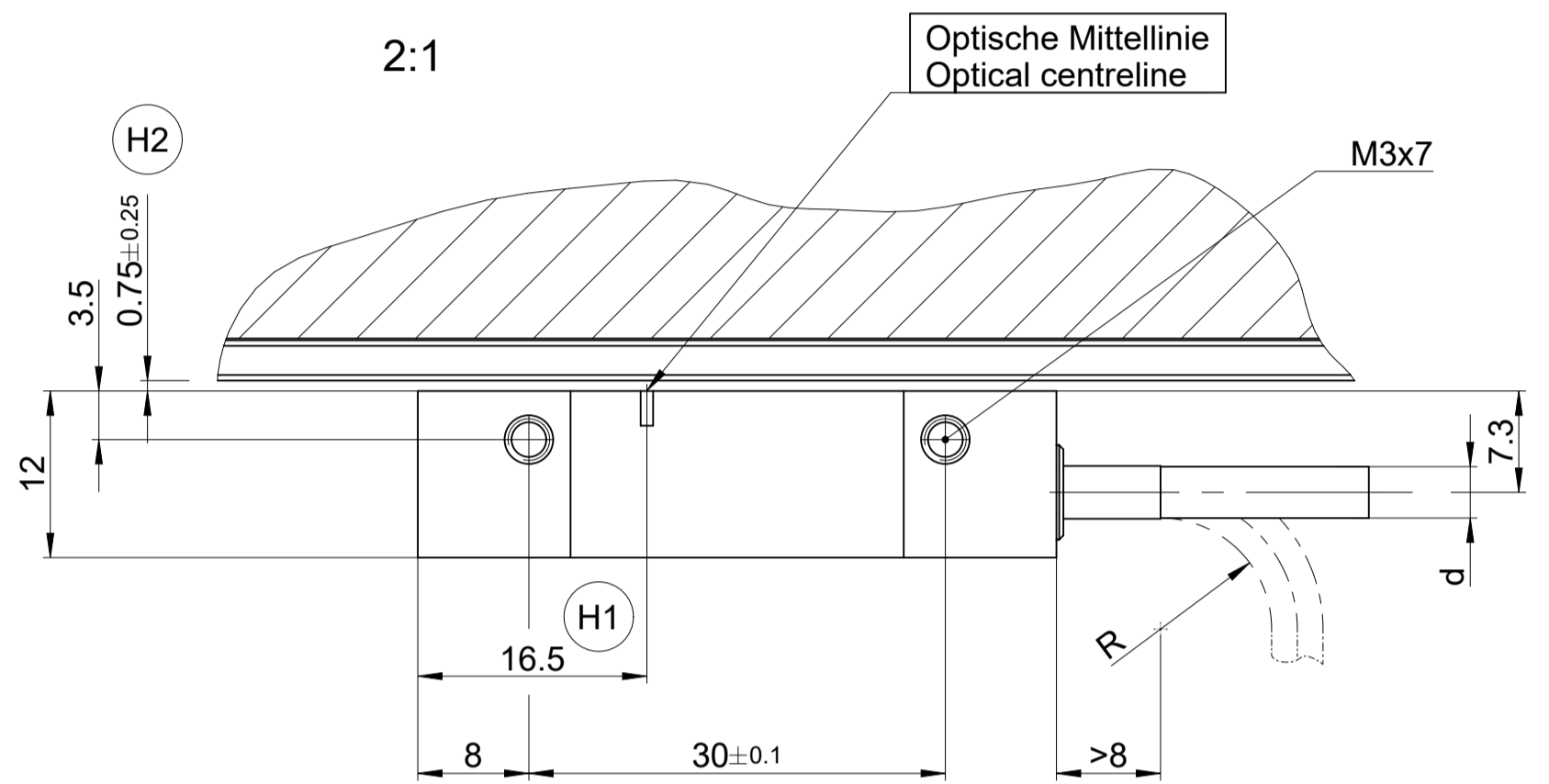
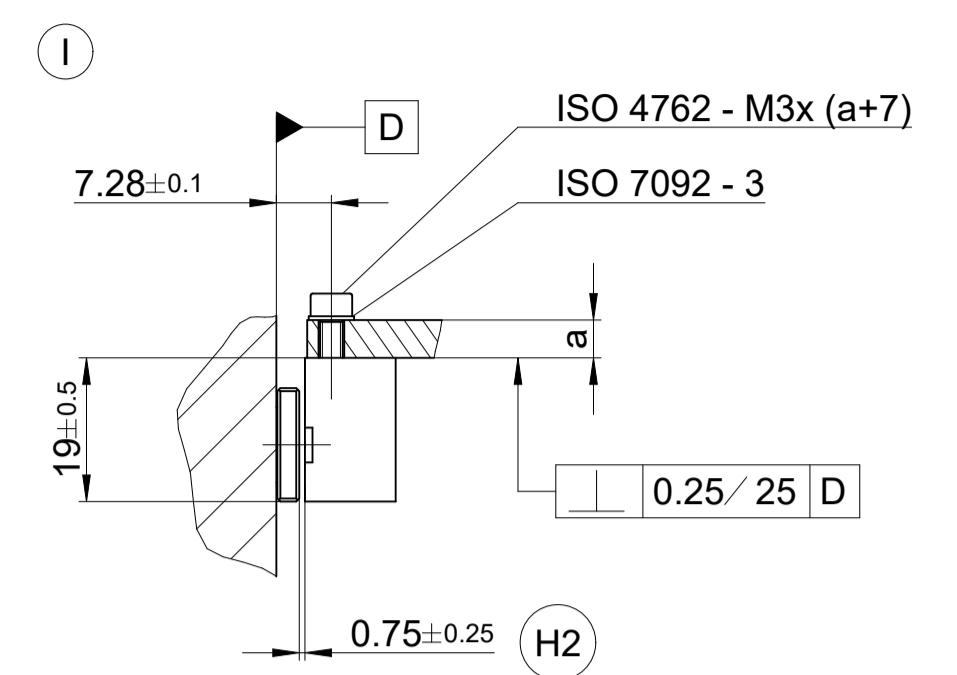
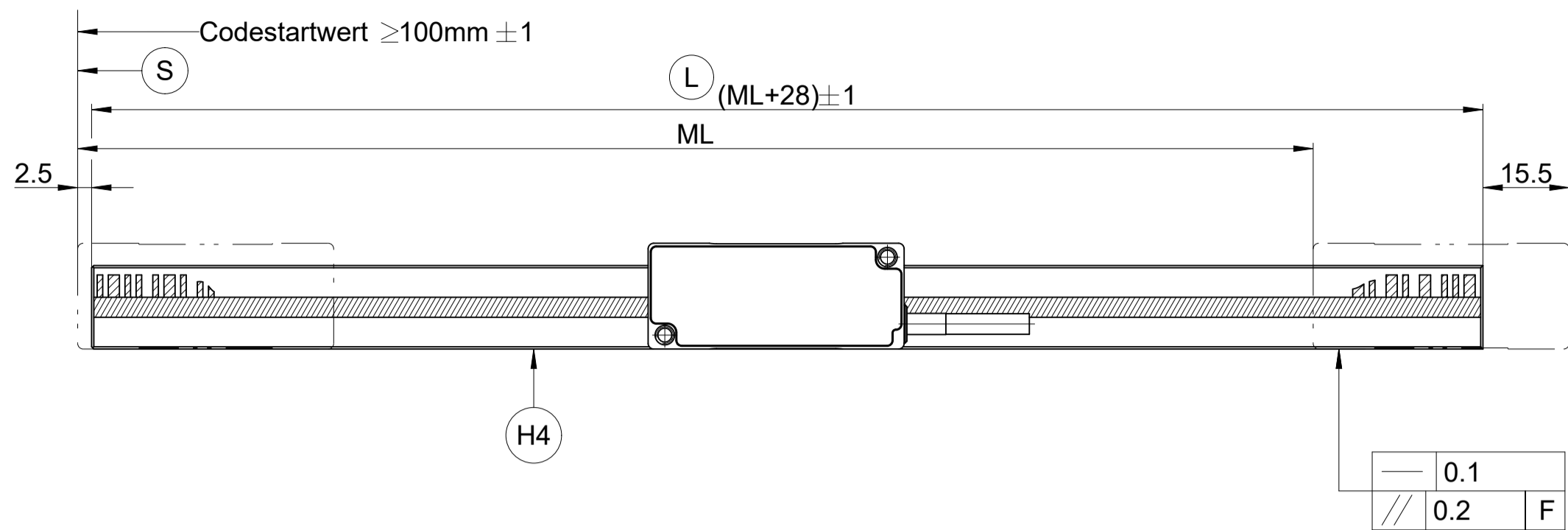
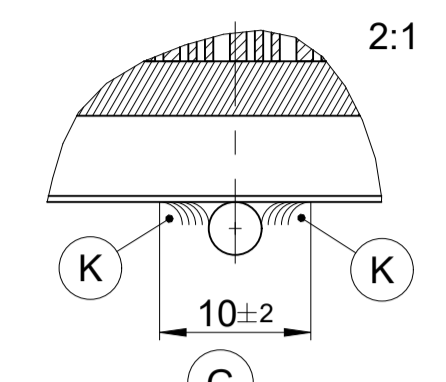


**Fixpunktklebung  
Fixed-point bond**

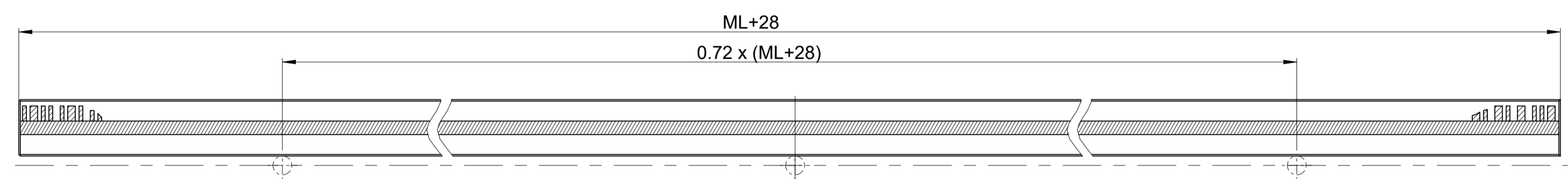


**Bei mittigem Anschlagstift  
With stop pin at center**

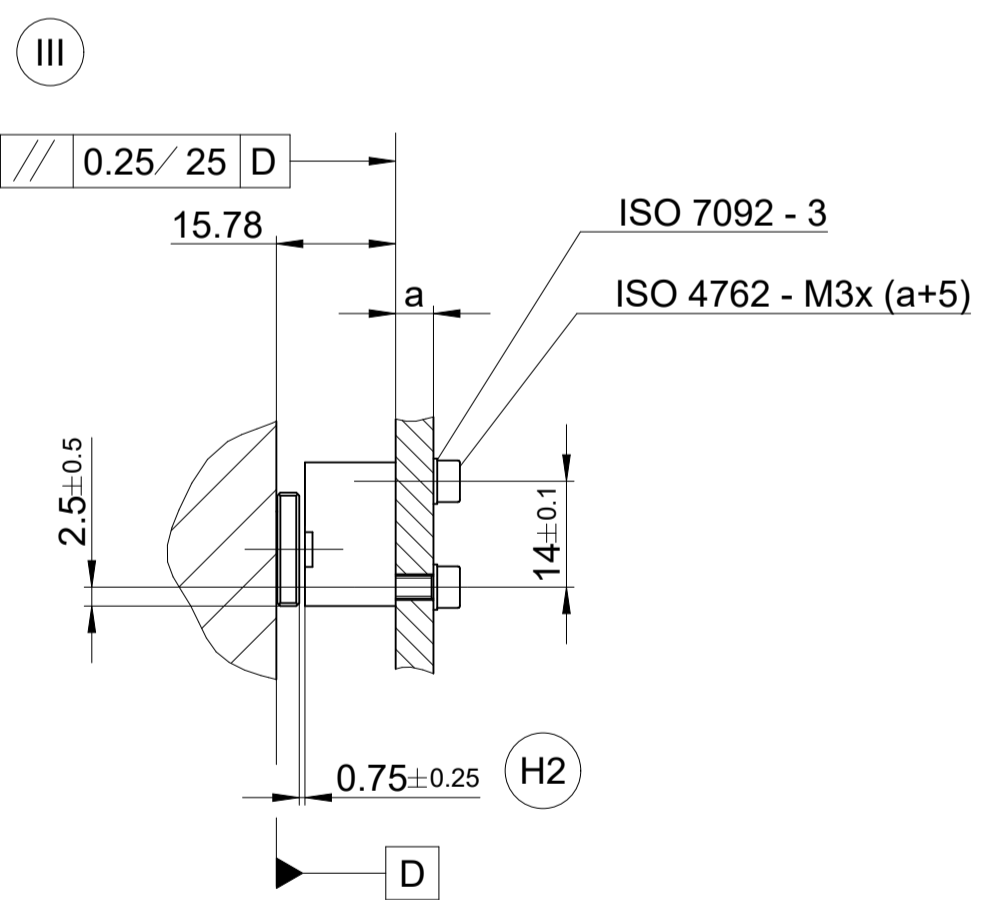
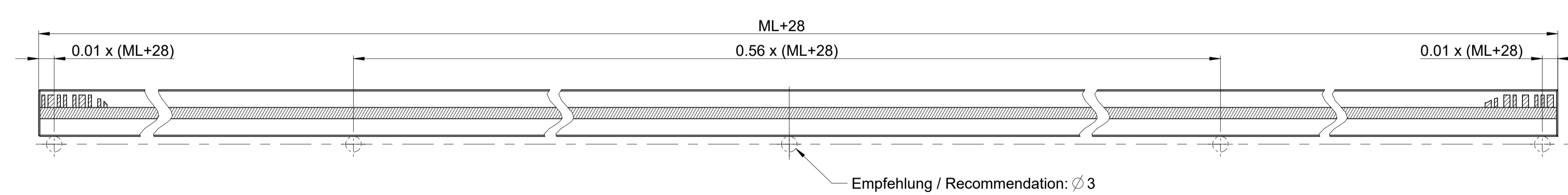


**Position Anschlagstifte  
Position stop pins**

ML ≤ 2040

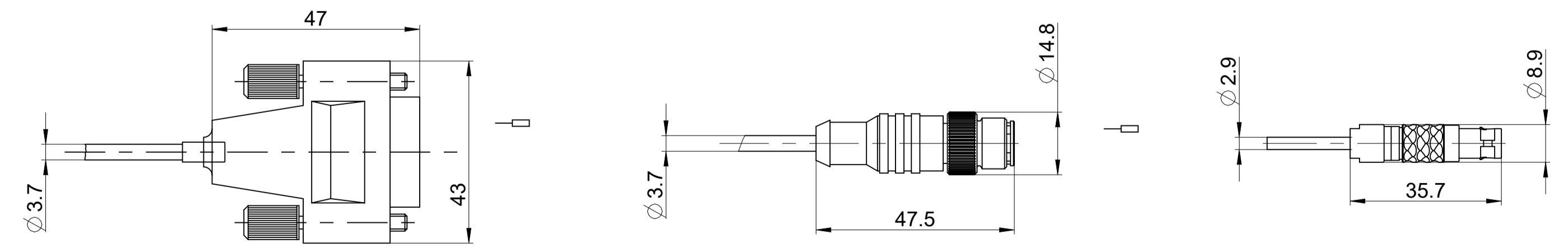


ML > 2040



- Ⓚ Ⓛ Ⓜ = Montagemöglichkeiten
- F = Maschinenführung
- \* = Anbaufehler plus dyn. Führungsfehler
- Ⓛ = Maßstablänge
- Ⓢ = Beginn der Messlänge ML
- Ⓜ1 = Optische Mittellinie
- Ⓜ2 = Montageabstand Abtastkopf zu Maßstab
- Ⓜ3 = Bewegungsrichtung der Abtasteinheit für Ausgangssignale gemäß Schnittstellenbeschreibung
- Ⓜ4 = Anschlagfläche Maßstab
- Ⓚ = Klebstoff
- Ⓜ = Dosierlänge

- Mounting options
- Machine guideway
- Mounting failure plus dyn. failures of guideway
- Scale length
- Beginning of measuring length ML
- Optical centreline
- Mounting gap
- Direction of scanning unit motion for output signals in accordance with interface description
- Stop surface scale
- Adhesive
- Dosage length



	d	R	R
		Feste Verlegung Rigid configuration	Wechselbiegung Frequent flexing
PUR	D 3.7 mm	> 8 mm	>= 40 mm
PUR	D 2.9 mm	> 6 mm	>= 30 mm

ID number: 1097815-01		Change No. C160627-05		Tolerances as per ISO 8015	
Phase: Serie		LIC 41x3		General Tolerances ISO 2768-1:2008-mH ±0.2	
Original drawing		Scale		Anschlussmaße / Mating Dimensions	
1:1	A1	LIC 41x3		Released	
DR. JOHANNES HEIDENHAIN GmbH		15.12.2023		Version   Revision   Sheet   Page	
83301 Traunreut, Germany		D1097815-09-A-01		1 of 1	