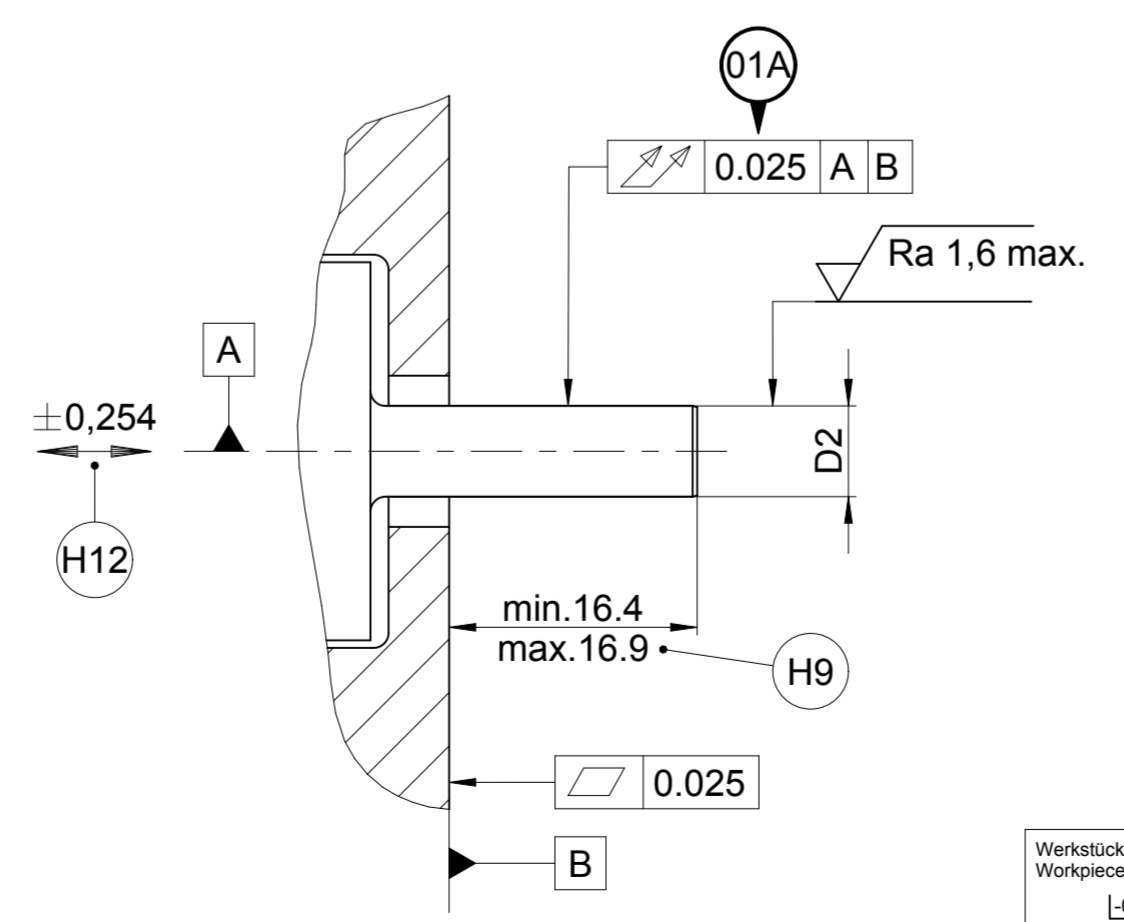
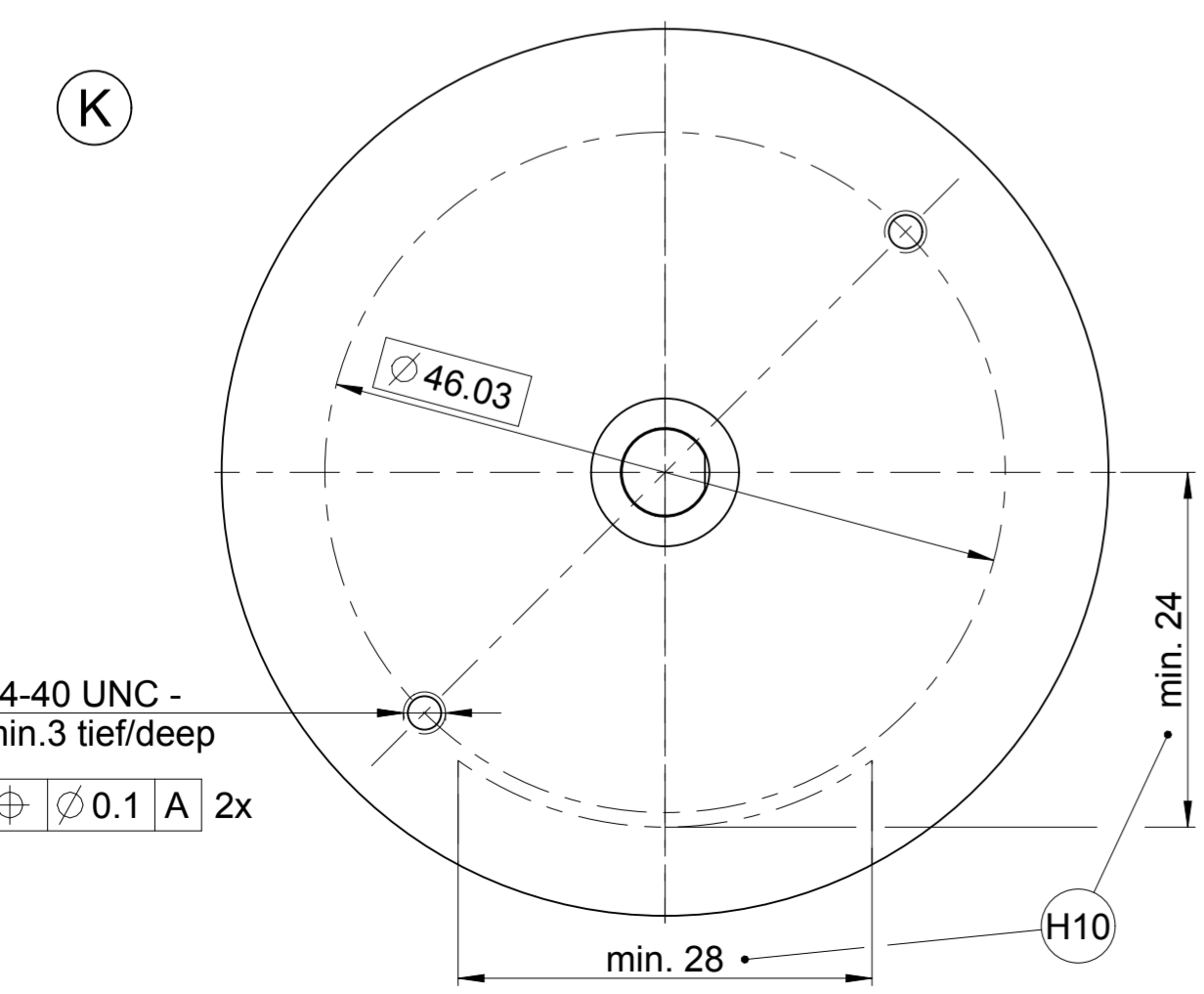


- A = Lagerung Kundenwelle  
Bearing for customer shaft
- K = Kundenseitige Anschlussmaße  
Required mating dimensions
- M = Messpunkte Arbeitstemperatur  
Operating temperature measuring points
- H1 = Kappe FOKAA1= H4 / SH4  
Cover FOKAA1= H4 / SH4
- H2 = Kappe FOKAA1=C4 / SC4  
Cover FOKAA1= C4 / SC4
- H3 = Stiftleiste 15-pol. axial  
Plug connector 15 pin axial
- H4 = Stiftleiste 15-pol. radial  
Plug connector 15 pin radial
- H5 = Zugentlastung FOKAA1=SC4 / SH4  
Strain relief FOKAA1= SC4 / SH4
- H6 = Bügel in Montagestellung  
slide pulled out in mounting position
- H7 = Befestigungsschraube #4.40 UNC,  
Anzugsmoment 0,21 ±0,02Nm  
Mounting screw #4.40 UNC,  
torque 0,21 ±0,02Nm
- H8 = Anzugsmoment 0,16 ±0,01Nm  
Torque 0,16 ±0,01Nm
- H9 = Max. Maß für FOKAA1= C4 / SC4  
Max. dim. FOKAA1= C4 / SC4
- H10 = Erforderlicher Einbauraum  
Required installation space
- H11 = Maßangabe für JH-Standardkabel  
Dimension for JH-standardcable
- H12 = Ausgleich von Montagetoleranzen und thermischer  
Ausdehnung  
Compensation of mounting tolerances and thermal  
expansion



R35i	C4/ H4/ SC4/ SH4	3/8+	0HN	∅ 9,528	∅ 9,525
		3/8	0HM	∅ 9,520	∅ 9,517
		8mm	0HB	∅ 8	∅ 7,997
		5/16+	0HR	∅ 7,940	∅ 7,937
		5/16	0HP	∅ 7,932	∅ 7,929
		1/4+	0HF	∅ 6,353	∅ 6,350
		1/4	0HE	∅ 6,345	∅ 6,342
		6mm	0HA	∅ 6	∅ 5,997
		5mm	0HC	∅ 5	∅ 4,997
		3/16+	0HL	∅ 4,765	∅ 4,762
		3/16	0HK	∅ 4,757	∅ 4,754
		4mm	0HD	∅ 4	∅ 3,997
		1/8+	0HH	∅ 3,178	∅ 3,175
1/8	0HF	∅ 3,170	∅ 3,167		
NAMEA1	FOKAA1	NADUA1	WELLA1	D1 <sup>+0,01</sup> E	D2 <sup>0</sup> -0,013 E

HEIDENHAIN  
DR. JOHANNES HEIDENHAIN GmbH  
83301 Traunreut, Germany

R35i RENCO FOKAA1= C4/ H4/ SC4/ SH4

Original drawing Scale: 2:1 Format: A2

Dimensions in mm

Version | Revision | Sheet | Page  
D1075452-01-A-01 | | 1 | 1

ID number: N3271  
Release number: N3271  
Tolerierung nach DIN ISO 8015  
Tolerances as per DIN ISO 8015  
Allgemeintol. ISO 2768-mH ±0,2  
General tol. ISO 2768-mH ±0,2