
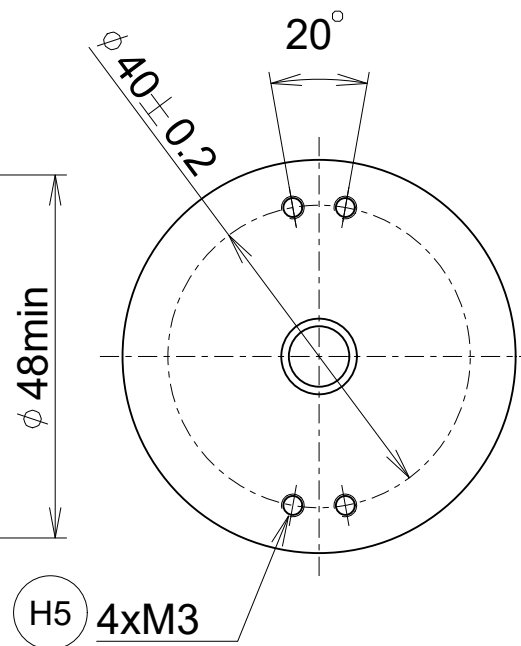




- A** = Bearing.
- M** = Measuring point for operating temperature.
- K** = Required mating dimensions.
- H1** = 2x screw, M3x3mm ,ISO 4029, ID 685222-14
Width A/F 1.5, Tightening torque 0.6 ± 0.1 Nm,
- H2** = Reference mark position $\pm 10^\circ$
- H3** = JAE connector 15-pin
- H4** = Compensation of mounting tolerance and thermal expansion no dynamic motion permitted.
- H5** = e.g. 4x screw, M3x5mm, ISO 4762-8.8-MKL
Width A/F 2.5, Tightening torque 1.0 ± 0.1 Nm
4x washer ISO 7092-3-200HV-A2
- H6** = Ensure protection against accidental contact in accordance with EN 60529.
-  = Direction of shaft rotation for output signals as per the interface description.



ϕ D	ϕ d
6 $^{+0.012}_0$	6 $^{-0.004}_{-0.012}$
8 $^{+0.015}_0$	8 $^{-0.005}_{-0.014}$

0GB,0GA	68A	60A
WELLA1	KUPPA1	FOKAA1

				ID number:						
				Change No.		C183986-40				
				Phase:		Serial production				
	Original drawing		ERN 11xx				Tolerances as per ISO 8015			
	Scale	Format					General Tolerances ISO 2768:1989-mH ≤6mm:±0,2			
Dimensions in mm	1/1	A3	Mating Dimensions							
The reproduction, distribution and utilization of this document as well as the communication of its contents to others without express authorization is prohibited. Offenders will be held liable for the payment of damages. All rights reserved in the event of the grant of a patent, utility model or design. (ISO 16016)										
				Released			Version	Revision	Sheet	Page
						D1041991-02 - A-01				1 of 1